

## VACUUM SWITCH

### DESCRIPTION

The FA-6 is a mechanically actuated, single-pole, double-throw vacuum switch designed to perform switching operations at high speed with low operating pressure and long contact life.

Operation of the FA-6 vacuum switch is unaffected by atmospheric conditions, contacts are free from contamination, and resistance remains low. The construction minimizes arcing at the contacts.

### TECHNICAL INFORMATION

*These data are for reference only. For design information refer to specifications.*

### GENERAL CHARACTERISTICS

#### Electrical

Interrupting current rating, a-c rms, resistive load

For total life of 1000 operations

at 550 volts, a-c rms. . . . . 10 amperes

For total life of 1,000,000 operations

at 550 volts, a-c rms. . . . . 2 amperes

For total life of 500,000,000 operations

at 550 volts, a-c rms. . . . . 0.1 ampere



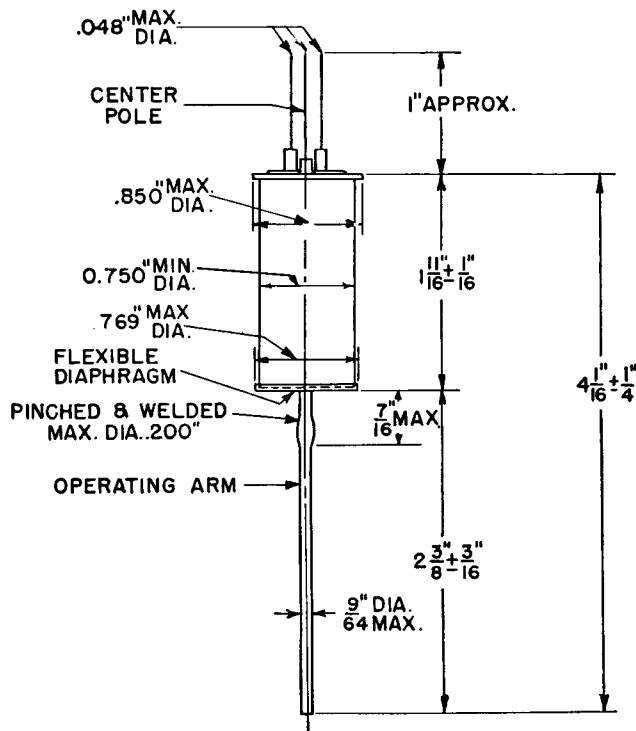
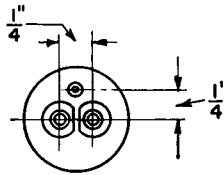
**TECHNICAL INFORMATION (CONT'D)**

**Mechanical**

Net weight, approximate . . . . .	1 1/2	ounces
Shipping weight, approximate . . . . .	3	pounds
Mounting position . . . . .	any	
Maximum over-all length (not including leads) . . . . .	4 5/16	inches
Maximum over-all width . . . . .	1 7/20	inch

**MAXIMUM RATINGS**

Internal hold-off voltage, rms. . . . .	550	volts
Maximum continuous current, rms. . . . .	15	amperes
Ambient temperature range . . . . .	-40 to +100	centigrade
Maximum allowable force on operating arm . . . . .	500	grams



OUTLINE  
 FA-6 VACUUM SWITCH

K-5188108

7-1-44