



**RADIO MANUFACTURERS ASSOCIATION
ENGINEERING DEPARTMENT**

Release No. 407

TYPE 1007

May 15, 1945

FULL WAVE GASEOUS RECTIFIER

Bulb (Over glass bulb)	MT-8
Base	Small Wafer Octal 5-Pin

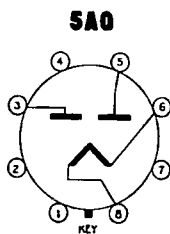
Dimensions		
Maximum Overall Length	2 5/8	Inches
Maximum Seated Height	2 1/16	Inches
Maximum Diameter	1 5/16	Inches

Basing	5AQ-1-0
---------------	---------

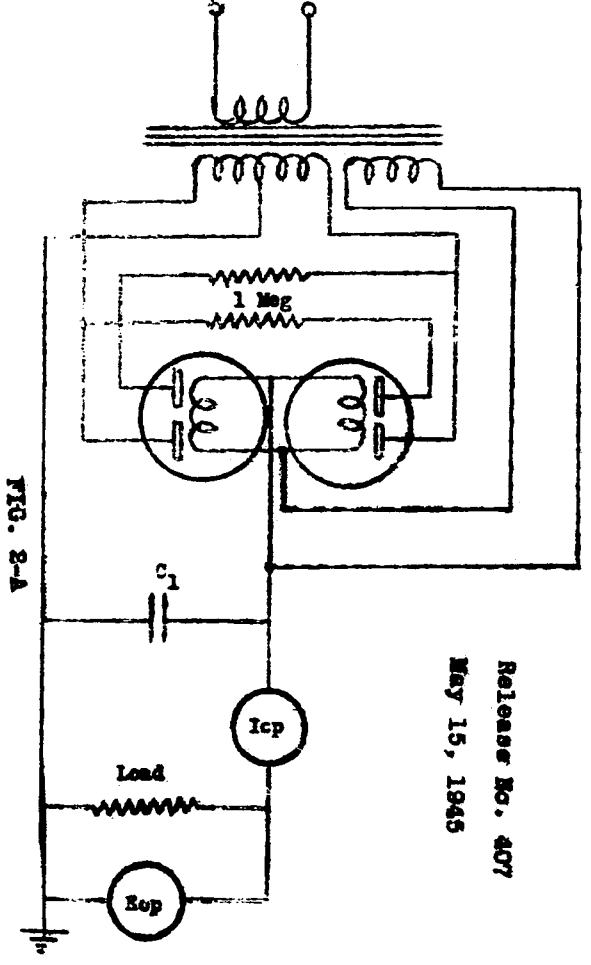
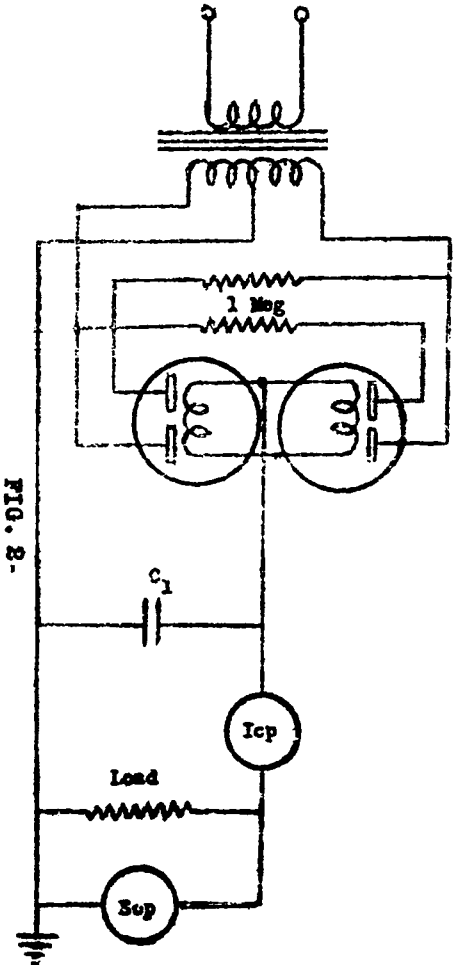
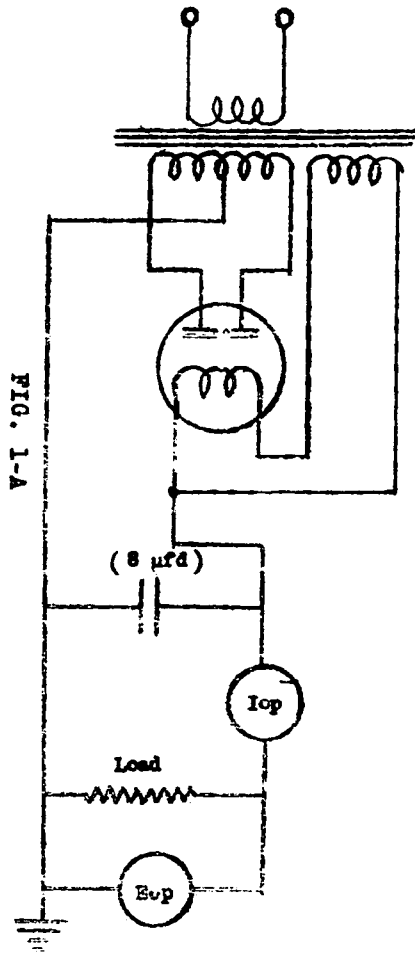
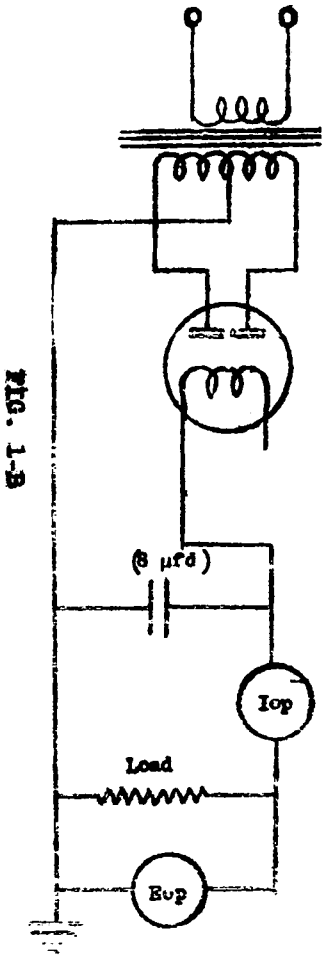
Ratings (Full Wave Rectifier with Condenser Input)

	<u>Fig.</u> <u>1-A</u>	<u>Fig.</u> <u>1-B</u>	<u>Fig.</u> <u>2-A</u>	<u>Fig.</u> <u>2-B</u>	
*Filament Voltage (RMS or DC)	1.0	0	1.0	0	volts
Nominal Heater Current	1.2	0	1.2	0	amp
Abs.Min.D-C Output Current (Per tube)	0	30	0	30	ma
*Maximum D-C Output Current (Per tube)	110	110	85	85	ma
*Maximum Peak Anode Current (Per tube)	330	330	510	510	ma
Abs. Min. Peak Starting Volt- age (Full Wave)	170	340	170	340	volts
Average Dynamic Voltage Drop	24	24	24	24	volts
*Maximum Peak Inverse Voltage	980	980	1200	1200	volts
*Maximum Peak Anode Voltage	490	490	600	600	volts

*For interpretation of ratings, see RMA Standards
for Storage Battery Operation.



sponsor:
Raytheon Manufacturing Co.



Value of C_1 and regulation must assure that both tubes will start.