

INSTRUMENT CATHODE-RAY TUBE

14 cm-diagonal rectangular flat-faced direct-view storage tube with variable persistence and internal graticule, intended for oscilloscope applications.

QUICK REFERENCE DATA

Final accelerator voltage	$V_{g10}(t)$	8,5	kV
Display area (10 x 8 divisions of 9 mm)		90 x 72	mm ²
Deflection coefficient, horizontal	M_x	9,5	V/div
vertical	M_y	4,1	V/div

SCREEN

Metal backed phosphor

	Colour	Persistence (non-store mode)	Persistence (store mode)
L14-110GH/55	green	medium-short	variable

Useful screen dimensions	min.	90 x 72	mm
Useful scan, horizontal	min.	90	mm
vertical	min.	72	mm
Spot eccentricity in horizontal and vertical directions	max.	6	mm

The scanned raster can be shifted and aligned with the internal graticule by means of correction coils fitted around the tube by the manufacturer.

HEATING

Writing section

Indirect by a.c. or d.c.; parallel supply

Heater voltage	V_f	6,3	V
Heater current	I_f	300	mA

Viewing section

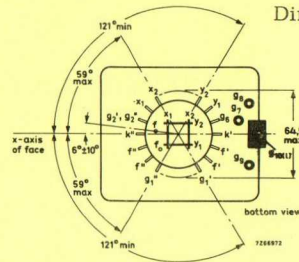
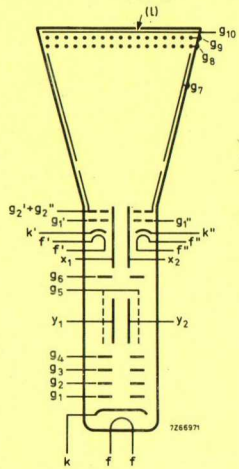
Indirect by d.c.; parallel supply

Heater voltage	$V_{f'}$	6,3	V
Heater current	$I_{f'}$	300	mA
Heater voltage	$V_{f''}$	6,3	V
Heater current	$I_{f''}$	300	mA

Blue Binder, Tab 4

MECHANICAL DATA

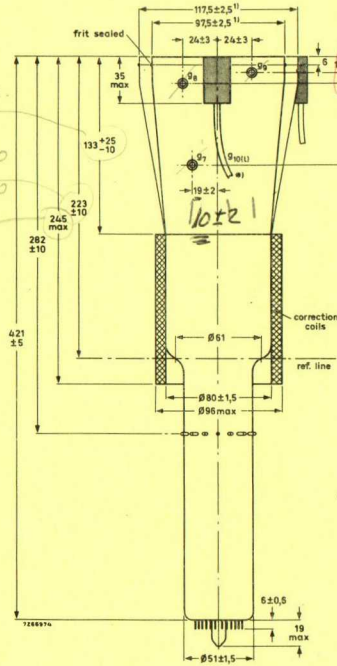
Dimensions in mm



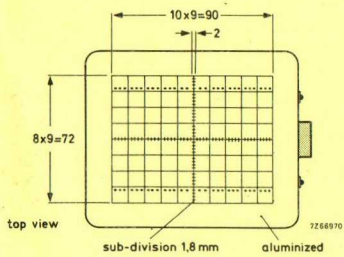
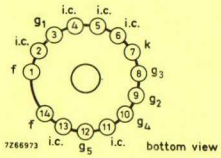
met cup
↓

15±
22±3
02±6

123 min.
253±30
-10
265 max.



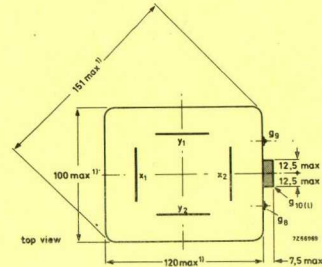
* Min. length of cable: 420 mm



Colour of graticule: brown-black
Line width 0,15 mm
Dot diameter 0,3 mm

Detail of side contact see page 3

1) The bulge at the frit seal may increase the indicated max. values by not more than 3 mm.



MECHANICAL DATA (continued)Mounting position: any

The tube should not be supported by the base alone and under no circumstances should the socket be allowed to support the tube.

The tags near the screen should not be subjected to mechanical stress.

Dimensions and connections

See also outline drawing

Overall length (socket included)	max.	445	mm
Face dimensions	max.	100 x 120	mm ²
<u>Net weight</u>	approx.	1100	g
<u>Base</u>		14 pin, all glass	

Accessories

Socket (supplied with tube)	type	55566
Side contact connector (14 required)	type	55561
Contact connector for g7, g8, and g9	type	55560

FOCUSING

electrostatic

DEFLECTION

double electrostatic

x-plates

symmetrical

y-plates

symmetrical

Angle between x and y traces

90 °

Angle between x-trace and x-axis of the internal graticule

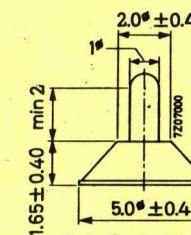
0 °

See also "Correction coils"

LINE WIDTH = *performance*

Measured with the shrinking raster method in the centre of the screen under typical operating conditions, adjusted for optimum spot size at a beam current $I_b = 10 \mu A$ (measured against x-plates)

Line width at the centre of the screen l. w. 0,35 mm



Detail of side contact