

MARCONI 6-VOLT VALVES

L 610, Low Magnification, 8/6

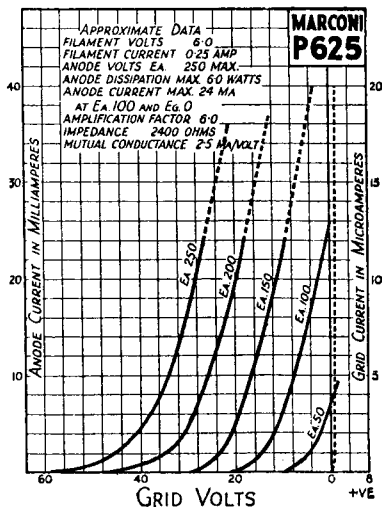
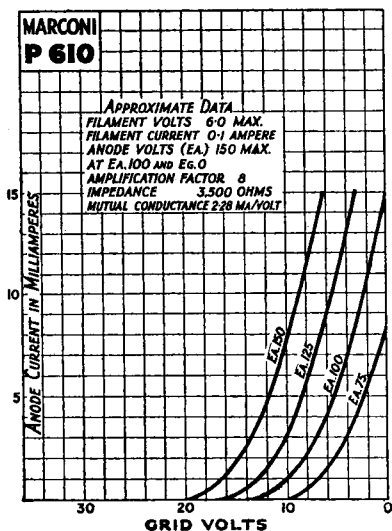
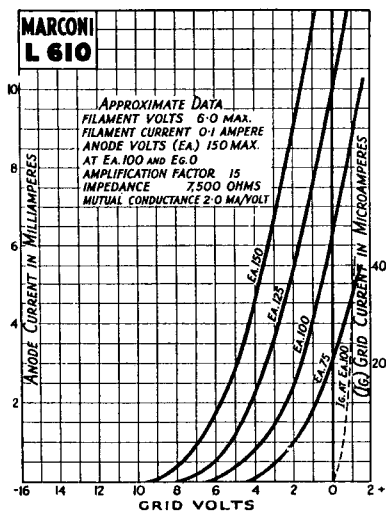
L610 is primarily a low frequency amplifying valve for first stage use, but is also largely used as detector when preceded by several H.F. stages.

P 610, Power, 10/6

P610 is a power output valve of modest current requirements and providing sufficient volume for most purposes.

P 625, Super-Power, 13/6

P625 is a super-power output valve for anode voltages up to 250. It is suitable for operating moving coil speakers at sufficient volume for a large room.

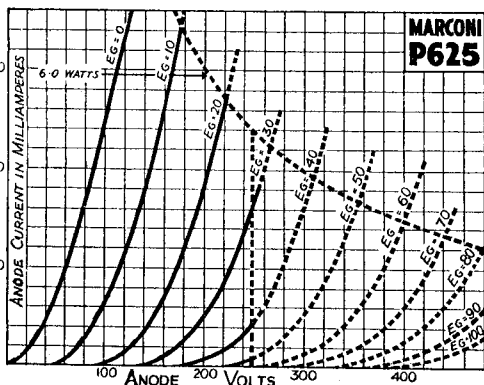


MARCONI 6-VOLT VALVES

P 625A, Super Power, 13,6

P625A is a super-power valve of similar design to P625 but for anode voltages not exceeding 200. The power output is sufficient for moving coil volume in a large room.

Anode Volts.	Grid Bias.	Average Anode Current.
120	-19½	16 m.a.
160	-28½	20 m.a.
200	-39	25 m.a.



Anode Volts, Anode Current
Curve for P 625.

Approx. Operating Data.

P625A, above.

P625, right.

Anode Volts.	Grid Bias.	Average Anode Current.
250	-26	24 m.a.
200	-20	19 m.a.
150	-14	14 m.a.
100	-7	10 m.a.

Anode Volts, Anode Current Curve for P625A

