

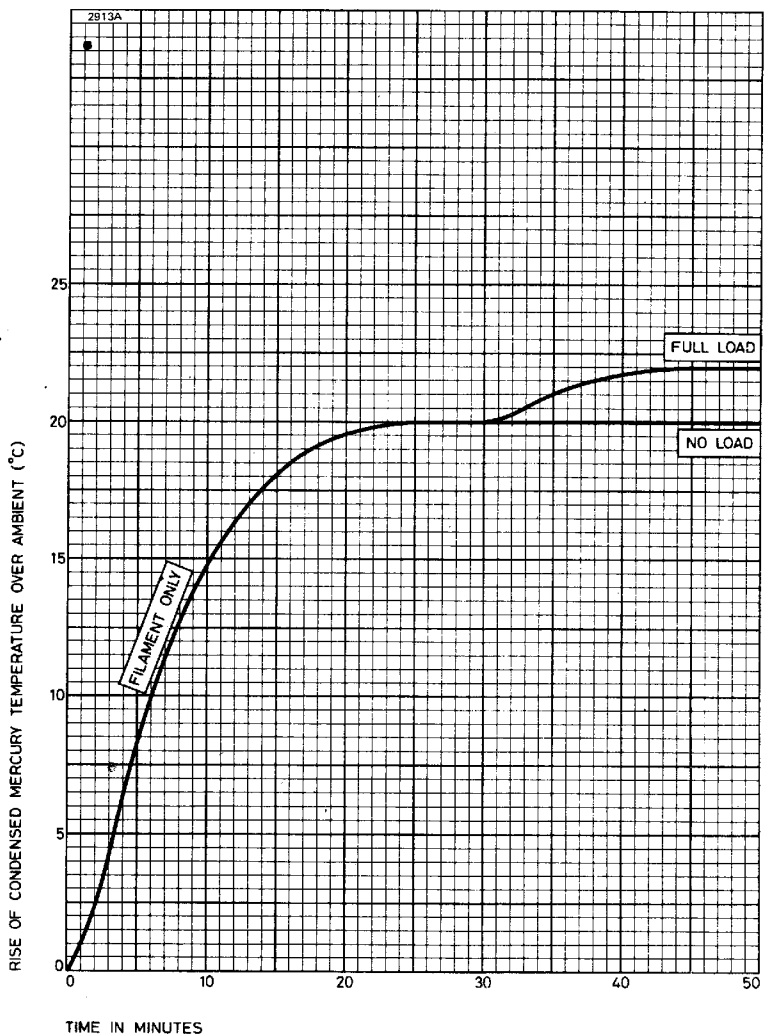


**MAXIMUM AND MINIMUM RATINGS (Absolute values)**

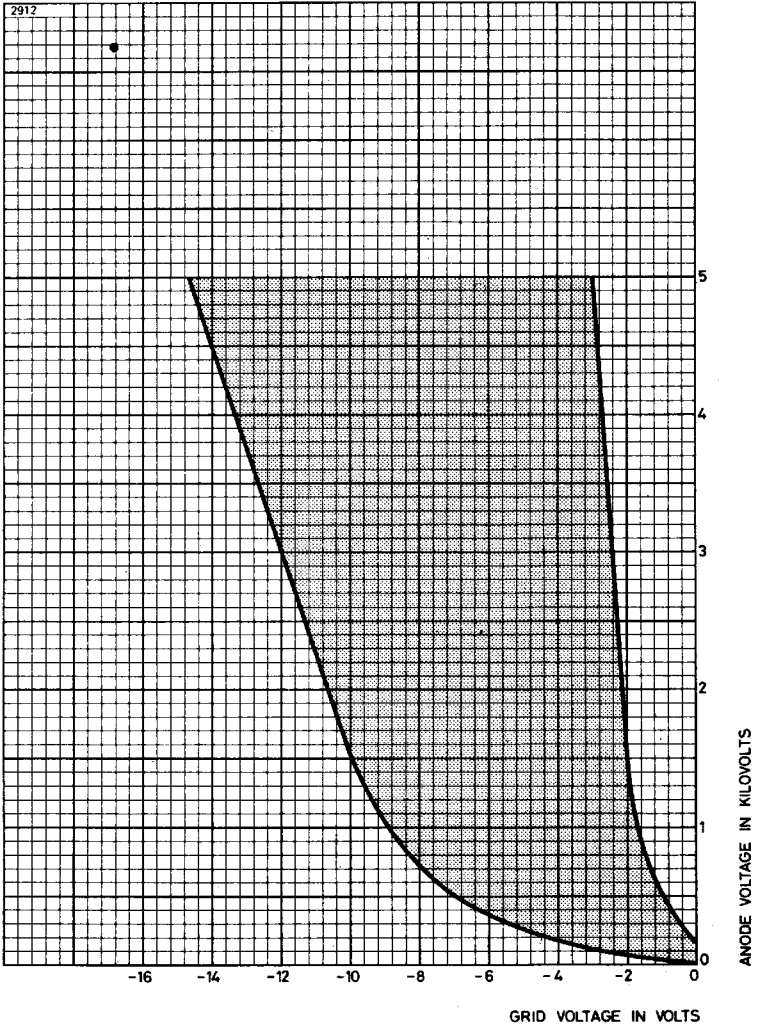
	Min	Max	
Peak forward anode voltage . . . . .	—	2.5	kV
Peak inverse anode voltage . . . . .	—	5.0	kV
Peak anode current . . . . .	—	2.0	A
Mean anode current (averaging time 15s max) . . . . .	—	0.5	A
Fault anode current (peak) . . . . .	—	40	A
Duration of fault current . . . . .	—	0.1	s
Condensed mercury temperature . . . . .	40	80	°C
Negative grid voltage:			
before conduction . . . . .	—	500	V
during conduction . . . . .	—	10	V
Mean grid current . . . . .	—	50	mA
Recommended grid resistor . . . . .	10	100	kΩ
Filament pre-heating time . . . . .	10	—	s
Power supply frequency . . . . .	—	150	Hz



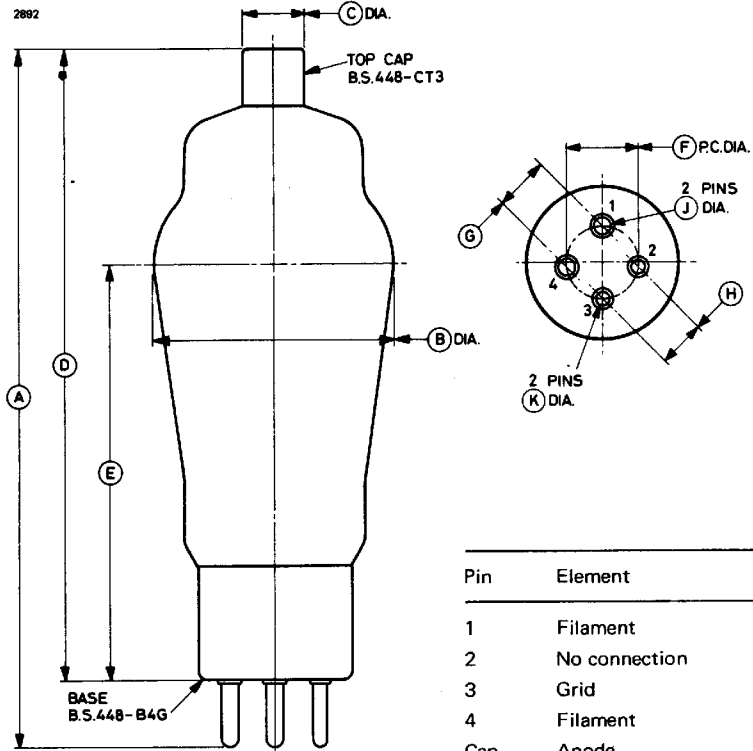
# TYPICAL HEATING CHARACTERISTIC



# CONTROL CHARACTERISTIC



**OUTLINE (All dimensions without limits are nominal)**



Pin	Element
1	Filament
2	No connection
3	Grid
4	Filament
Cap	Anode

Ref	Inches	Millimetres	Ref	Inches	Millimetres
A	6.250 max	158.8 max	F	0.640	16.26
B	2.125 ± 0.031	53.98 ± 0.79	G	0.468	11.89
C	0.566	14.38	H	0.437	11.10
D	5.625 ± 0.250	142.9 ± 6.4	J	0.156	3.96
E	3.625	92.08	K	0.125	3.18

Millimetre dimensions have been derived from inches.