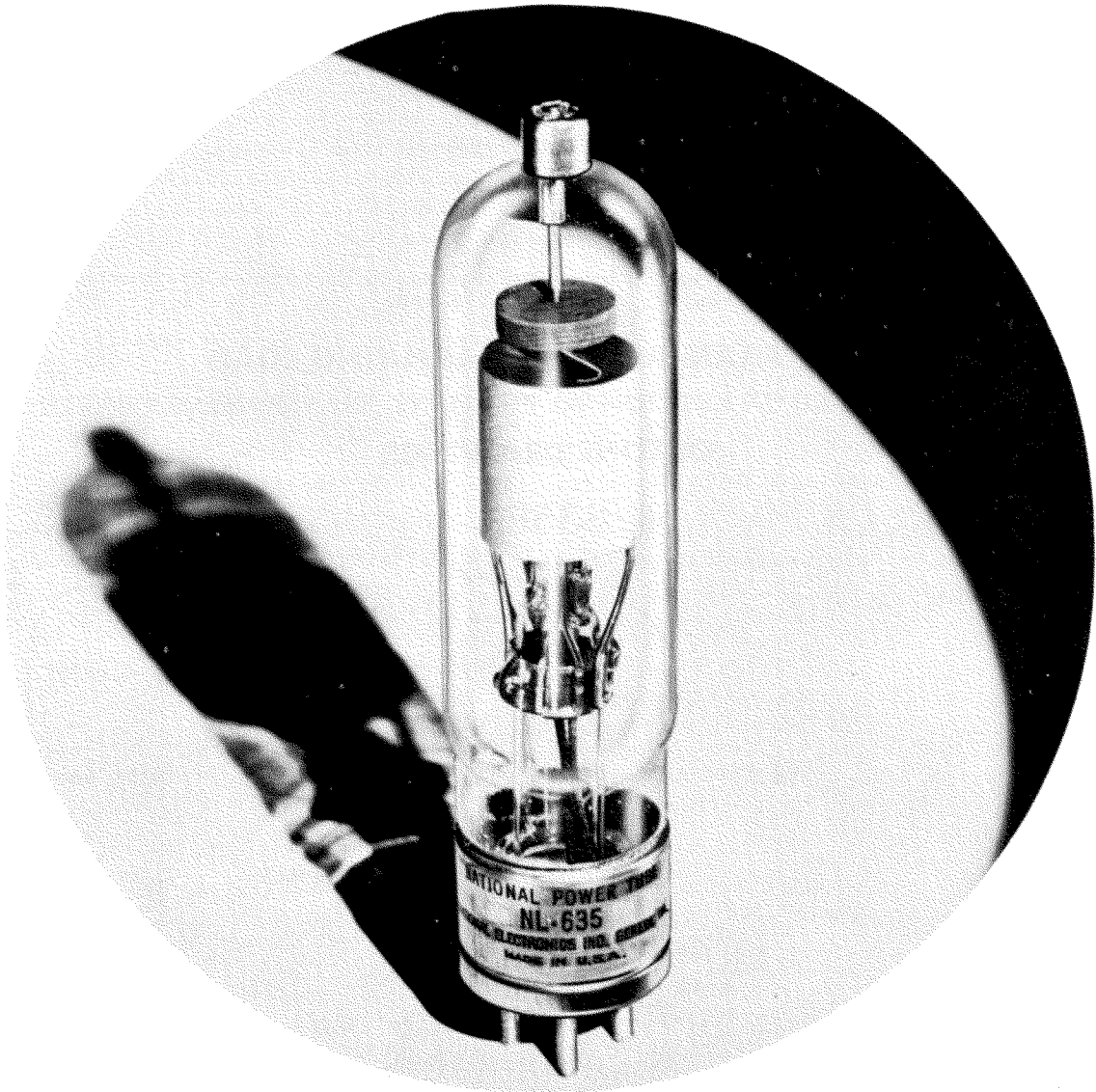


RECTIFIER TUBE

NL-635
RECTIFIER TUBE
6.4 Amperes dc



NATIONAL POWER TUBE NL-635 is a sturdy rectifier tube designed especially for industrial power rectifier applications up to 250 volts dc. It is mercury and gas filled for efficiency, long life, and the ability to withstand high inverse voltages. NL-635 utilizes a No. 412 industrial 4-pin base. It is available with a bracket base for panel mounting under the type number NL-635P and the new National lug type base under the number NL-635L.

NATIONAL ELECTRONICS, INC.

GENEVA, ILLINOIS, U. S. A.

NL-635 RECTIFIER TUBE TECHNICAL INFORMATION

dc Amperes output (maximum)	6.4
Instantaneous Amperes output (maximum)	77
Maximum time of averaging anode current (seconds)	20
Maximum peak inverse volts	1000
Filament volts	2.5
Filament amperes	18 ± 2
Filament heating time (seconds)	60
Typical arc drop at 20 amperes peak (volts)	9
Typical Anode starting voltage (volts)	20
Maximum ac short circuit current (amperes)	770
Condensed mercury temperature limits (°C)*	-40 to +100
Approximate temperature rise, cond. mercury above ambient (°C)	30
Mounting position	vertical, base down
Net weight (ounces)	6
Approx. shipping weight (lbs.)	4

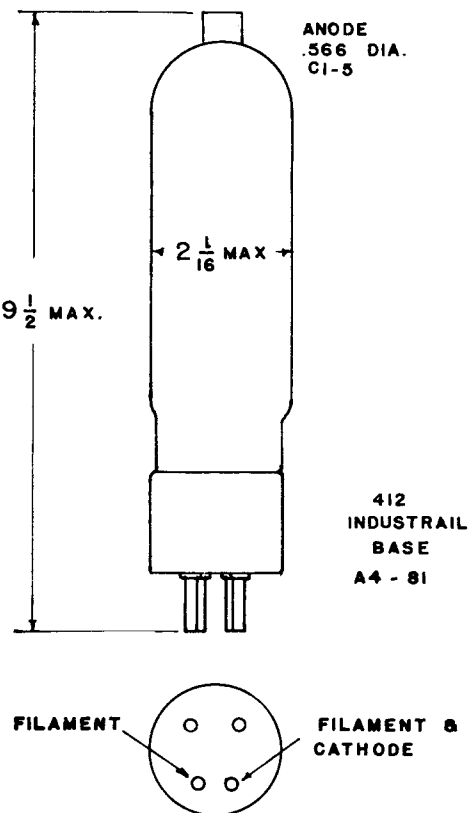
*Satisfactory operation will be obtained between -40 to +100°C. For long life the tube should be operated between +40 to +100°C condensed mercury, or approximately +10 to +70°C ambient.

LIGHT FILAMENT BEFORE APPLYING LOAD

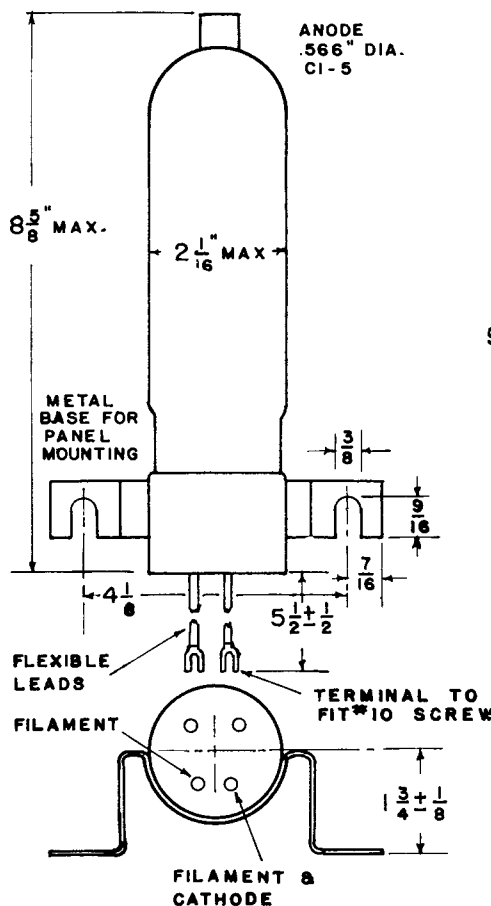
ALL DATA ARE BASED ON RETURNS TO FILAMENT TRANSFORMER CENTER TAP

OUTLINE DRAWINGS

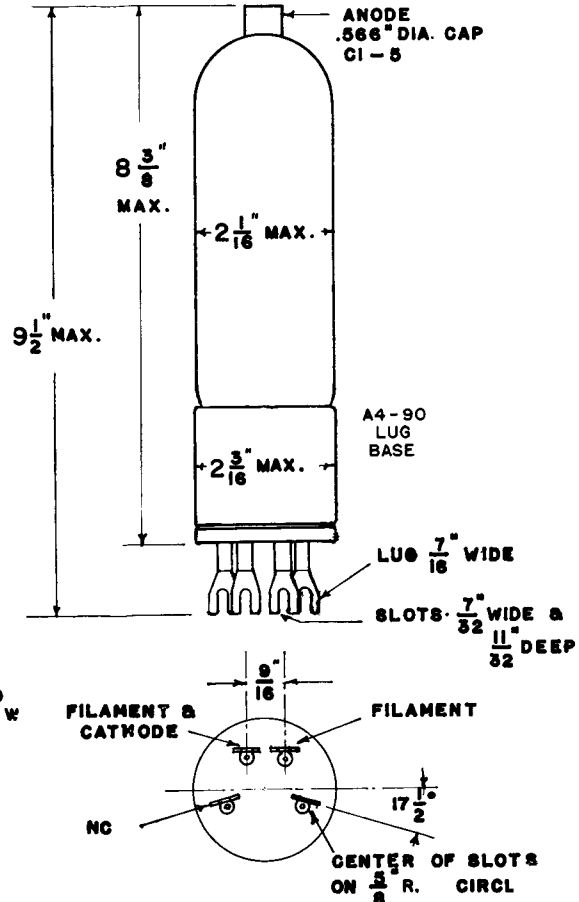
NL-635



NL-635P



NL-635L



Printed in USA 11/57

NATIONAL ELECTRONICS, INC.

GENEVA, ILLINOIS, U. S. A.