

—Standard Valves—

4059-A
Valve

4059-A VALVE

HALF WAVE RADIATION COOLED THERMIONIC RECTIFIER.

SPECIFICATION.

Cathode.

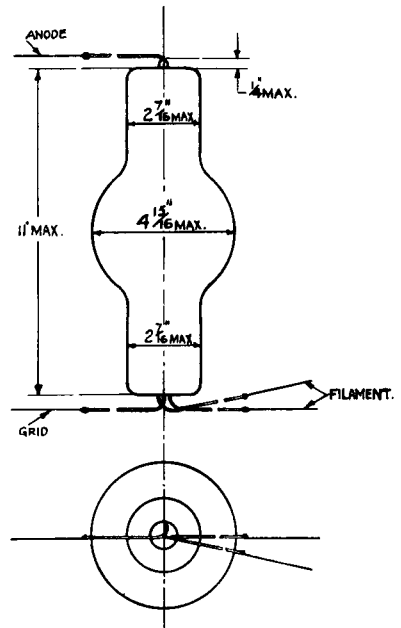
Pure Tungsten filament.
Constant voltage type.

Dimensions.

Neck diameter $2\frac{7}{16}$ " (6.2 cms.)
Overall length 11" (28 cms.)
Overall diameter $4\frac{15}{16}$ " (12.5 cms.)
Net weight 0.7 lbs. (320 gms.)

Constants.

Filament voltage 12.5 volts
Nominal filament current 6 amps.
Total emission 0.4 amps.
Maximum peak inverse voltage 25,000 volts
Maximum peak anode current 350 mA.
Maximum continuous anode dissipation 300 watts

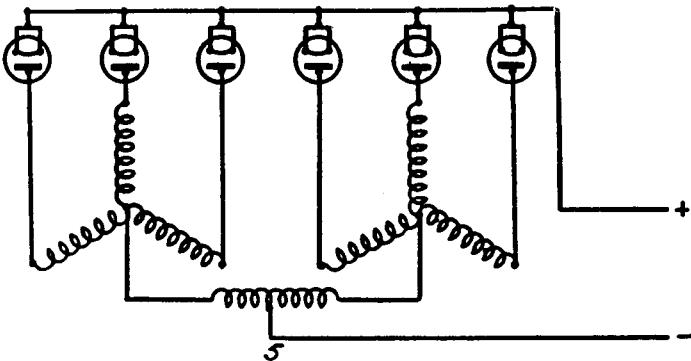
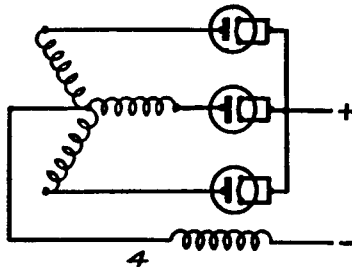
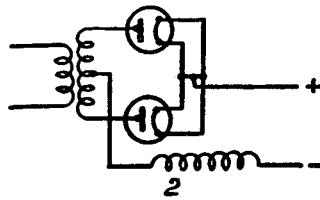
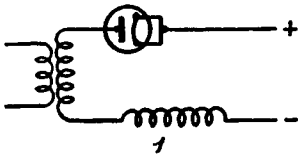


V.4059-A.1
Nov. 1937

—Standard Valves—

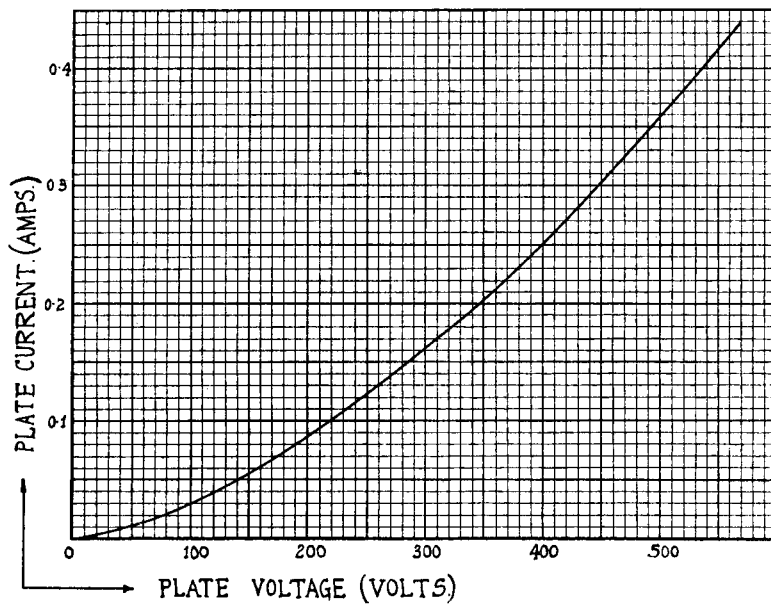
TYPICAL OPERATING CONDITIONS.

Circuit	Number of valves	Load potential in volts	Load current in amps.
1	1	3,750	0.12
2	2	7,500	0.23
4	3	10,000	0.35
5	6	10,000	0.7



—Standard Valves—

4059-A
Valve



V.4059-A.2
Nov. 1937

PRINTED IN
ENGLAND