

—Standard Valves—

4075-A
Valve
(VLS.61)

4075-A VALVE

(Previously Coded VLS.61 Valve).

HALF WAVE HIGH VACUUM RECTIFIER.

SPECIFICATION.

Cathode.

Oxide coated filament.
Constant voltage type.

Base.

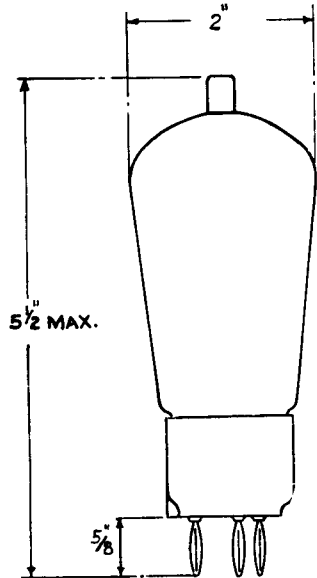
Standard British 4-pin.
Anode connected to top cap.

Dimensions.

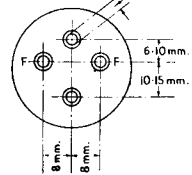
Overall length $5\frac{1}{2}$ " (14 cms.)
Overall diameter 2" (5.1 cms.)
Net weight 0.12 lbs. (55 gms.)

Constants.

Filament voltage 2 volts
Nominal filament current 1.2 amps.
Maximum peak inverse voltage 15,000 volts
Maximum peak anode current 10 mA.



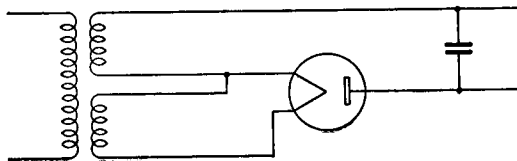
DIAM. OF PINS 3.00mm.



OUTPUT AS HALF WAVE RECTIFIER.

3 milliamps at 6,000 volts.

Typical Circuit :—



V.4075-A.1
Nov. 1937

PRINTED IN
ENGLAND