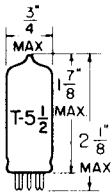


TUNG-SOL

DOUBLE-DIODE TRIODE

MINIATURE TYPE



GLASS BULB

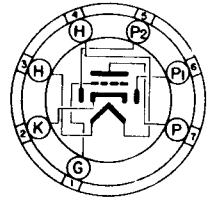
COATED UNIPOTENTIAL CATHODE

HEATER

3.15 VOLTS 0.6 AMP.

AC OR DC

ANY MOUNTING POSITION



BOTTOM VIEW

MINIATURE BUTTON
7 PIN BASE

78T

THE 3AV6, WHICH COMBINES A HIGH- μ TRIODE AND TWO INDEPENDENT DIODE UNITS IN THE 7 PIN MINIATURE CONSTRUCTION, IS DESIGNED FOR USE IN 600 MA. SERIES HEATER OPERATED RECEIVERS. IT PERMITS A SINGLE TUBE TO FUNCTION AS A DETECTOR, AVC RECTIFIER, AND AUDIO AMPLIFIER. COUPLING BETWEEN THE DIODE AND TRIODE SECTIONS IS MINIMIZED BY THE USE OF INTERNAL SHIELDING. THERMAL CHARACTERISTICS OF THE HEATER ARE CONTROLLED SUCH THAT HEATER VOLTAGE SURGES DURING THE WARM-UP CYCLE ARE MINIMIZED PROVIDED IT IS USED WITH OTHER TYPES WHICH ARE SIMILARLY CONTROLLED. WITH THE EXCEPTION OF HEATER RATINGS, ITS CHARACTERISTICS ARE IDENTICAL TO TYPE 6AV6.

DIRECT INTERELECTRODE CAPACITANCES

	WITH SHIELD ^A	WITHOUT SHIELD	
GRID TO PLATE: (G TO P)	2	2	μ f
INPUT: G TO (H+K)	2.2	2.2	μ f
OUTPUT: P TO (H+K)	1.2	0.8	μ f
COUPLING: #2 DIODE PLATE TO GRID (MAX.)	0.04	0.04	μ f

^AEXTERNAL SHIELD #316 CONNECTED TO PIN #2.

RATINGS

INTERPRETED ACCORDING TO DESIGN CENTER SYSTEM

HEATER VOLTAGE	3.15	VOLTS
MAXIMUM HEATER-CATHODE VOLTAGE:		
HEATER NEGATIVE WITH RESPECT TO CATHODE		
TOTAL DC AND PEAK	200	VOLTS
HEATER POSITIVE WITH RESPECT TO CATHODE		
DC	100	VOLTS
TOTAL DC AND PEAK	200	VOLTS
MAXIMUM PLATE VOLTAGE	300	VOLTS
MAXIMUM PLATE DISSIPATION	0.5	WATT
MAXIMUM POSITIVE DC GRID #1 VOLTAGE	0	VOLTS
MAXIMUM DIODE CURRENT		
FOR CONTINUOUS OPERATION (EACH UNIT)	1	MA.
HEATER WARM-UP TIME (APPROX.)*	11.0	SECONDS

*HEATER WARM-UP TIME IS DEFINED AS THE TIME REQUIRED FOR THE VOLTAGE ACROSS THE HEATER TO REACH 80% OF ITS RATED VOLTAGE AFTER APPLYING 4 TIMES RATED HEATER VOLTAGE TO A CIRCUIT CONSISTING OF THE TUBE HEATER IN SERIES WITH A RESISTANCE OF VALUE 3 TIMES THE NOMINAL HEATER OPERATING RESISTANCE.

CONTINUED ON FOLLOWING PAGE

→ INDICATES A CHANGE.

PRINTED IN U. S. A.

TUNG-SOL

CONTINUED FROM PRECEDING PAGE

TYPICAL OPERATING CONDITIONS AND CHARACTERISTICS

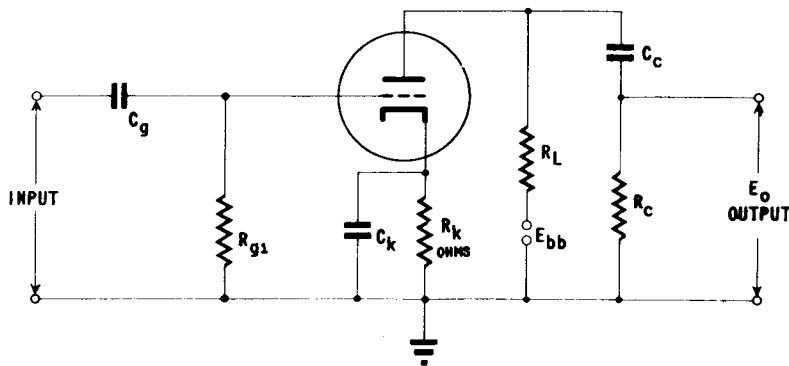
CLASS A_1 AMPLIFIER

HEATER VOLTAGE	3.15	3.15	VOLTS
HEATER CURRENT	0.6	0.6	AMP.
PLATE VOLTAGE	100	250	VOLTS
GRID #1 VOLTAGE	-1	-2	VOLTS
PLATE RESISTANCE	80 000	62 500	OHMS
AMPLIFICATION FACTOR	100	100	
TRANSCONDUCTANCE	1 250	1 600	μ MHOS
PLATE CURRENT	0.5	1.2	MA.
AVERAGE DIODE CURRENT AT 10 VOLTS DC (EACH UNIT)	2.0	2.0	MA.

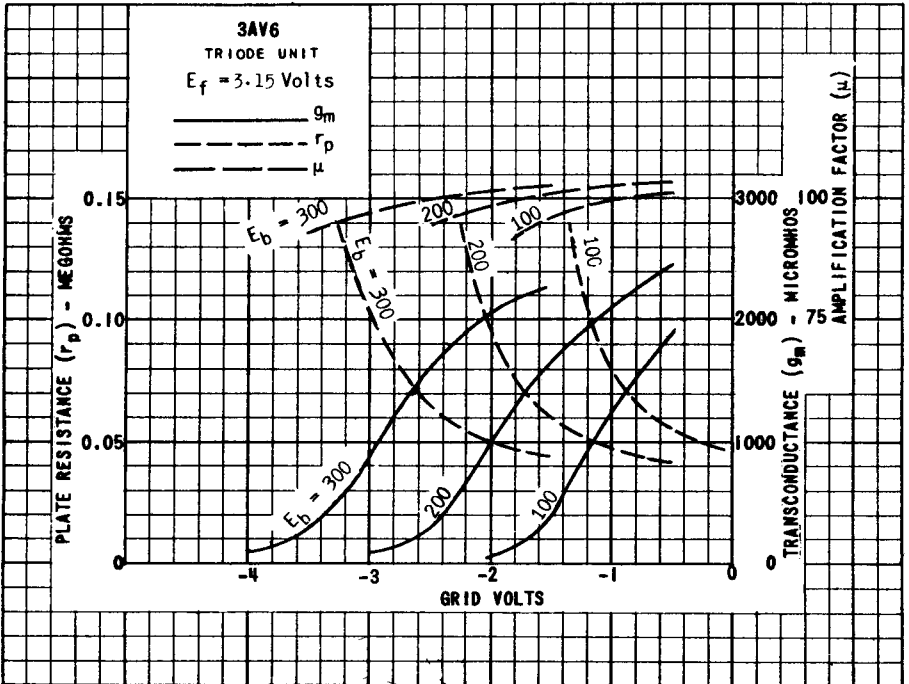
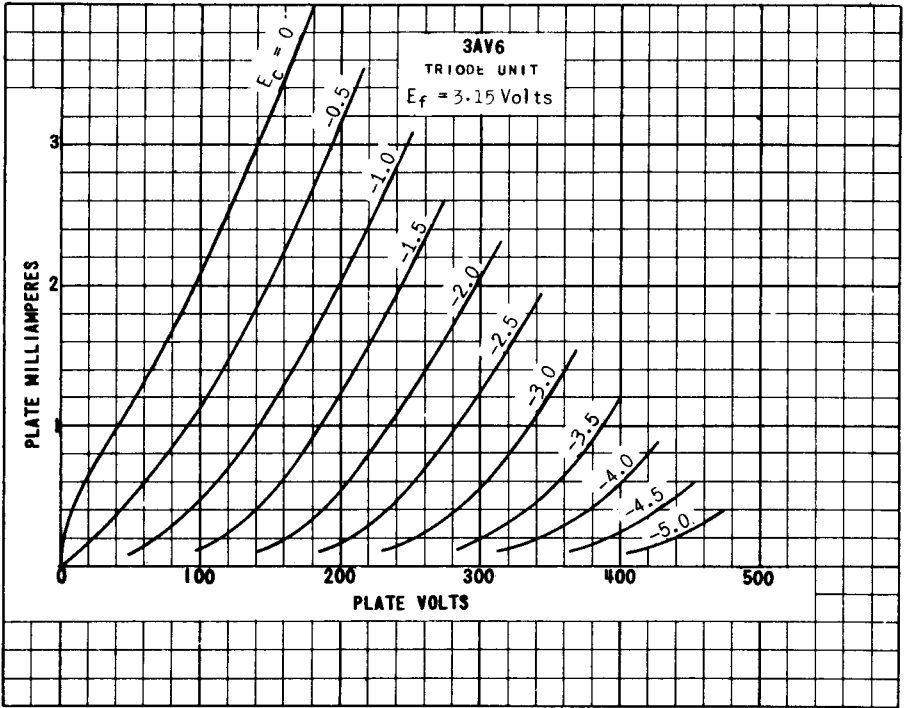
RESISTANCE COUPLED AMPLIFIER

TRIODE UNIT

HEATER VOLTAGE	3.15	3.15	VOLTS
HEATER CURRENT	0.6	0.6	AMP.
PLATE SUPPLY VOLTAGE	90	250	VOLTS
CONTROL GRID VOLTAGE	0	0	VOLTS
PLATE LOAD RESISTOR	220 000	470 000	OHMS
CONTROL GRID RESISTOR	10.0	10.0	MEG OHMS
INPUT CONDENSER	0.01	0.01	μ f
OUTPUT CONDENSER	0.01	0.01	μ f
GRID RESISTOR OF FOLLOWING STAGE	470 000	470 000	OHMS
SIGNAL SOURCE IMPEDANCE (MAX.)	1 000	1 000	OHMS
DISTORTION	5	5	PERCENT
OUTPUT VOLTAGE	5.5	30	VOLTS
VOLTAGE GAIN AT 400 CPS	42	63	



NOTE: COUPLING CAPACITORS C_g AND C_c SHOULD BE SELECTED TO GIVE DESIRED FREQUENCY RESPONSE. R_k SHOULD BE ADEQUATELY BY-PASSED BY CAPACITOR C_k .



PRINTED IN U. S. A.

3AV6

3AV6
EACH DIODE UNIT
 $E_f = 3.15$ Volts

