



Excellence in Electronics

The CK5847 (404A) is a heater-cathode type, high transconductance, sharp cut-off pentode of miniature construction. The design features of low noise, low interelectrode capacitances, and high transconductance make it suitable for service as a wide band RF or IF amplifier. It is designed for dependable operation in equipment with low plate supply voltages. The heater-cathode construction is designed to withstand many thousands of cycles of intermittent operation.

MECHANICAL DATA

ENVELOPE: T-6½ Glass

BASE: Miniature Button 9-Pin

TERMINAL CONNECTIONS:

- | | |
|--|---------------------|
| Pin 1 Grid #1 | Pin 5 No Connection |
| Pin 2 No Connection | Pin 6 Plate |
| Pin 3 Heater, Lower Internal Shield | Pin 7 No Connection |
| Pin 4 Cathode, Grid #3 Upper Internal Shield | Pin 8 Grid #2 |
| | Pin 9 Heater |

MOUNTING POSITION: Any

ELECTRICAL DATA

DIRECT INTERELECTRODE CAPACITANCES: ($\mu\mu\text{fds}$) (With External Shield)

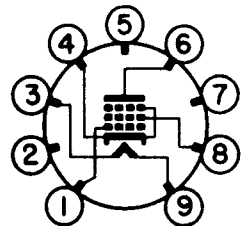
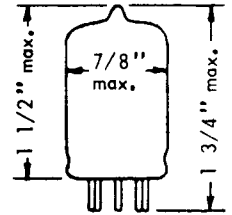
Grid to Plate	0.05 max.
Input	7.2
Output	3.15

RATINGS ABSOLUTE MAXIMUM VALUES:

Heater Voltage (ac or dc)	6.3 ± 10% volts
Plate Voltage	200 volts
Grid #2 Voltage	165 volts
Plate Dissipation	3.3 watts
Grid #2 Dissipation	0.85 watts
Cathode Current	40 ma
Heater-Cathode Voltage	55 volts

CHARACTERISTICS AND TYPICAL OPERATION:

Heater Voltage	6.3	6.3 volts
Heater Current	0.3	0.3 A.
Plate Voltage	150	160 volts
Grid #2 Voltage	150	160 volts
Cathode Bias Resistance	110	600 ohms
Grid #1 Voltage	0	+8.5 volts
Plate Current	13.5	13.5 ma
Grid #2 Current	4.0	4.0 ma
Plate Resistance	0.2	0.2 meg
Transconductance	13,000	13,000 μmhos



BOTTOM VIEW

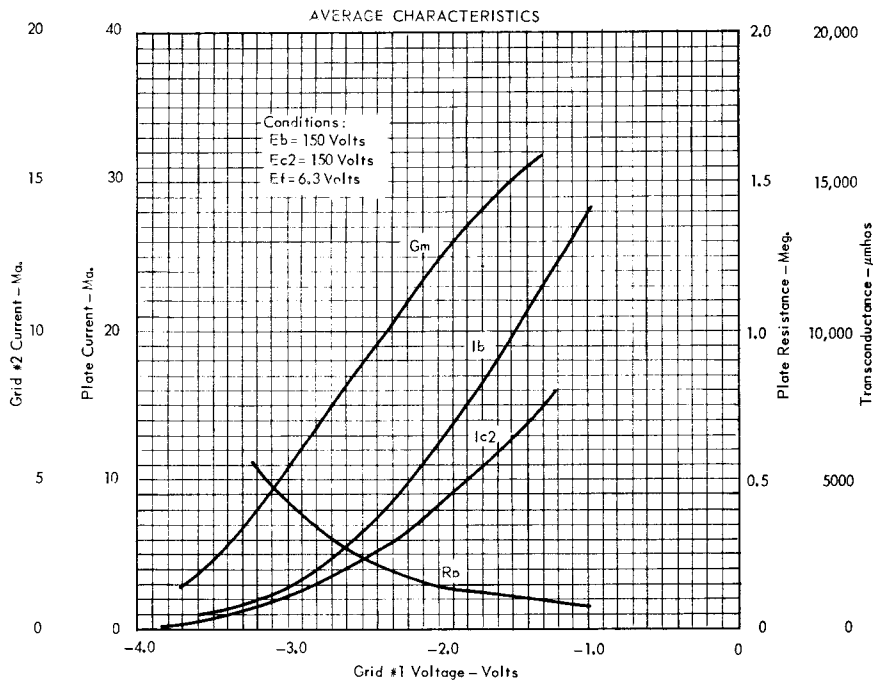
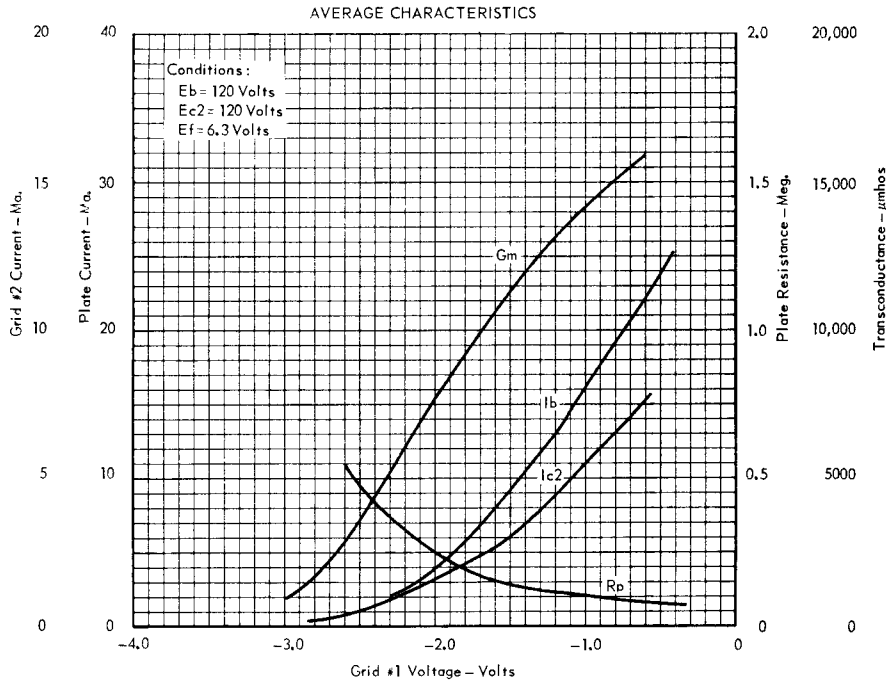
9X

Tentative Data

INDUSTRIAL COMPONENTS DIVISION



PENTODE



INDUSTRIAL COMPONENTS DIVISION

RAYTHEON COMPANY



PENTODE

