

VACUUM SWITCH

DESCRIPTION

The FA-6 is a mechanically actuated, single-pole, double-throw vacuum switch designed to perform switching operations at high speed with low operating pressure and long contact life.

Operation of the FA-6 vacuum switch is unaffected by atmospheric conditions, contacts are free from contamination, and resistance remains low. The construction minimizes arcing at the contacts.

TECHNICAL INFORMATION

These data are for reference only. For design information refer to specifications.

GENERAL CHARACTERISTICS

Electrical

Interrupting current rating, a-c rms, resistive load

For total life of 1000 operations

at 550 volts, a-c rms. 10 amperes

For total life of 1,000,000 operations

at 550 volts, a-c rms. 2 amperes

For total life of 500,000,000 operations

at 550 volts, a-c rms. 0.1 ampere



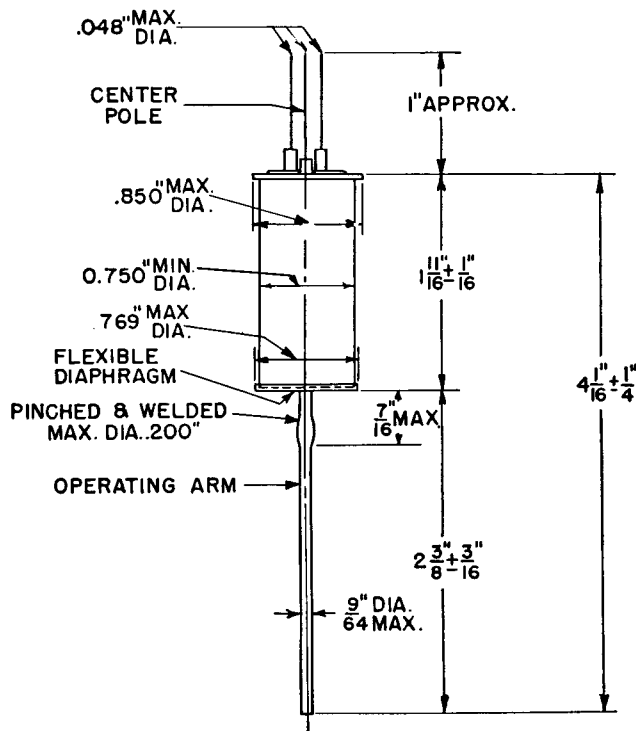
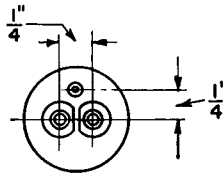
TECHNICAL INFORMATION (CONT'D)

Mechanical

Net weight, approximate	1 1/2 ounces
Shipping weight, approximate	3 pounds
Mounting position	any
Maximum over-all length (not including leads).....	4 5/16 inches
Maximum over-all width	1 7/20 inch

MAXIMUM RATINGS

Internal hold-off voltage, rms.	550 volts
Maximum continuous current, rms.	15 amperes
Ambient temperature range	-40 to +100 centigrade
Maximum allowable force on operating arm	500 grams



OUTLINE
 FA-6 VACUUM SWITCH

K-5188108

7-1-44