

PHANOTRON

DESCRIPTION

The FG-280 is a half-wave, all metal, mercury-vapor rectifier for converting alternating current to direct current. It is adapted to applications where rectification of higher currents at lower frequencies and voltages is desired than is possible

with high-vacuum tubes. In comparison with high-vacuum tubes, the FG-280 has a low and constant voltage drop which is an advantage in low-voltage rectifier applications as it allows more efficient utilization of power and results in lower circuit losses.

TECHNICAL INFORMATION

These data are for reference only. For design information refer to specifications.

GENERAL CHARACTERISTICS

Number of electrodes	2
Electrical	
Cathode—indirectly heated type	
Heater voltage	5.0 volts
Heater current, approx.	10.0 amperes
Heating time, typical	5 minutes
Peak voltage drop, typical	15 volts
Mechanical	
Net weight, approx.	22 ounces
Shipping weight, approx.	3 pounds
Mounting position	vertical, with radiator end down

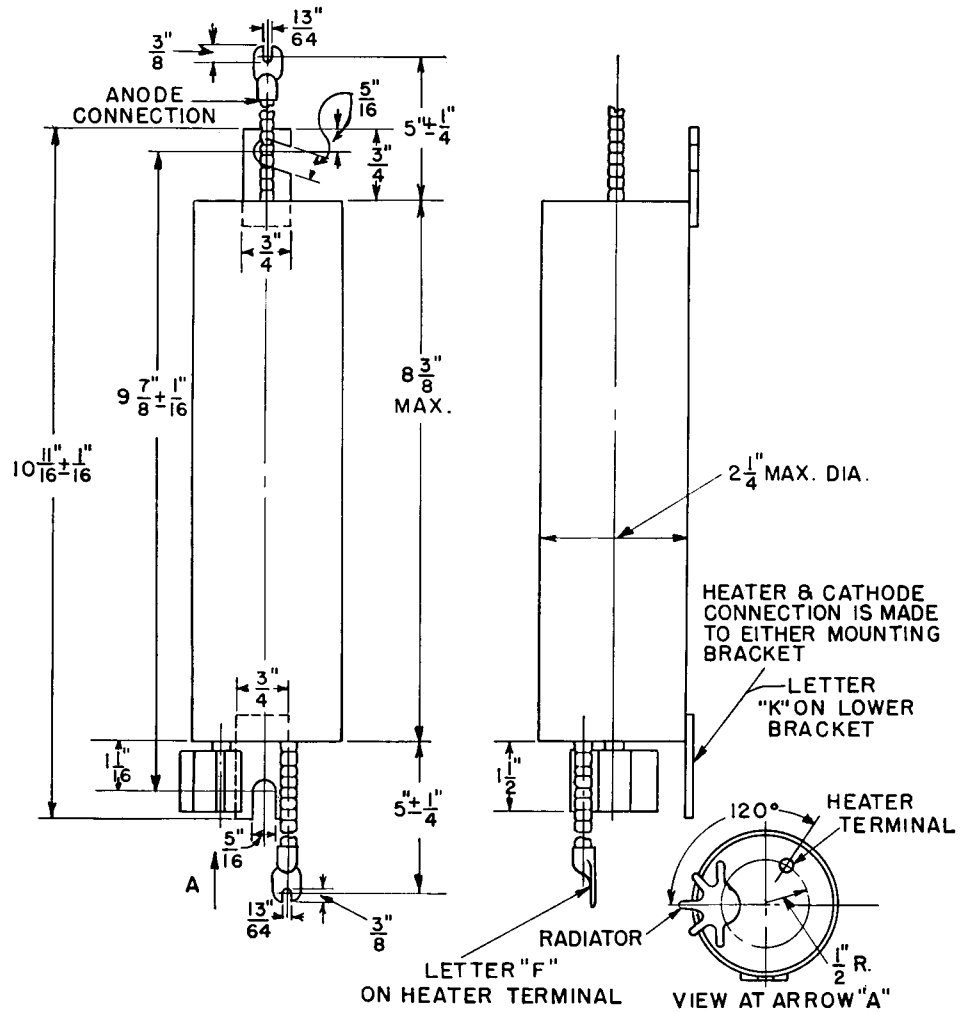


Electronic
TUBE

TECHNICAL INFORMATION (CONT'D)

MAXIMUM RATINGS

Maximum peak inverse anode voltage.....	2000 volts
Maximum instantaneous anode current	
25 cycles and above.....	40 amperes
Below 25 cycles.....	12.8 amperes
Average anode current.....	6.4 amperes
Surge anode current, for design only.....	200 amperes
Duration of surge current.....	0.1 second
Maximum time of averaging current.....	15 seconds
Temperature limits, condensed mercury.....	+40 +80 centigrade
Recommended temperature, condensed mercury.....	40 centigrade



OUTLINE
 FG-280 PHATRON

K-5344712

8-10-44