



Hot Cathode Mercury Vapour Rectifier

2V/560E
(4079A)

4079A

CATHODE.

Oxide-coated shielded filament

Voltage	5	V
Nominal current	38	A

DIMENSIONS.

Maximum overall length	540	mm.
Maximum bulb diameter	195	mm.
Net weight	1.9	kg.
Base—Special 2-pin—(see drawing)		
Top cap—Special—(see drawing)		

MAXIMUM RATINGS.

Maximum peak inverse voltage	20	kV
Maximum peak anode current	20	A
Maximum average anode current	7.5	A
Condensed mercury temperature range with forced ventilation	15°C. to 65°C. maximum	

The above ratings apply to operation with a choke-input filter and a supply frequency of 50 c/s.

MAXIMUM PEAK INVERSE VOLTAGE RATINGS.

Natural Ventilation	15°C. to 45°C.	15°C. to 35°C.	—	—
Forced Ventilation	15°C. to 60°C.	15°C. to 50°C.	15°C. to 40°C.	15°C. to 35°C.
Peak inverse Voltage	Less than 7,000 V	7,500 to 10,000 V	10,000 to 12,500 V	Greater than 12,500 V

2V/560E**(4079A)****Hot Cathode Mercury
Vapour Rectifier****4079A****TYPICAL OPERATING CONDITIONS.**

Circuit No.	No. of Valves	Maximum DC output volts	Maximum DC output Amps.
2	2	6,400 V	12.5 A
3	4	13,000 V	12.5 A
4	3	9,500 V	16 A
5	6	9,500 V	30 A
6	6	18,500 V	16 A

This rectifier being directly heated it is recommended that the output circuit be returned to the mid-point of the filament transformer secondary.

CATHODE HEATING TIME.

Ambient Temperature	10°C. to 15°C.	15°C. to 20°C.	20°C. and above
Min. Pre-heating period	30 min.	15 min.	5 min.

After shipment or transit the valve must be pre-heated not less than 30 minutes before any anode voltage is applied so that the mercury may be distributed correctly. Temperature limits given under "Natural Ventilation" are only valid for unrestricted natural ventilation, forced air blast being required for operation up to the maximum condensed mercury temperature limit.

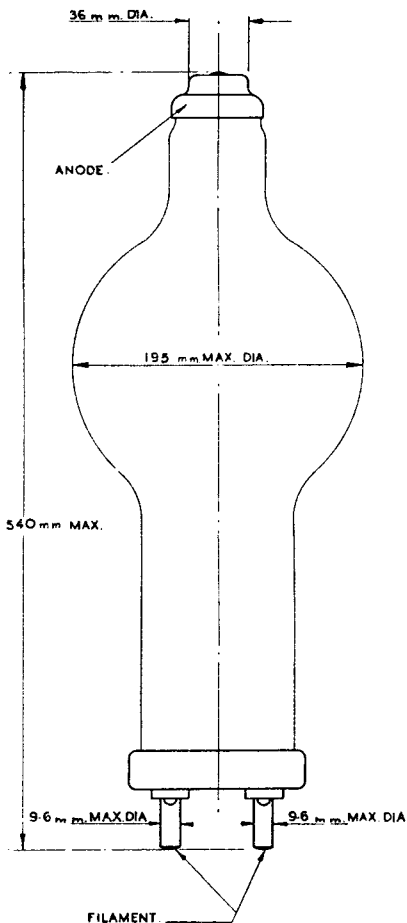
Note.—Before putting a valve of this type into service it is recommended that reference be made to the General Information Sheet K.

2V/560E
(4079A)



Hot Cathode Mercury Vapour Rectifier

4079A



June 1946

2V/560E—3

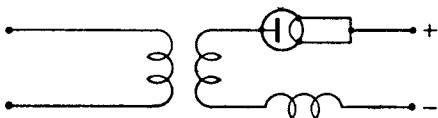
2V/560E
(4079A)

Hot Cathode Mercury Vapour Rectifier

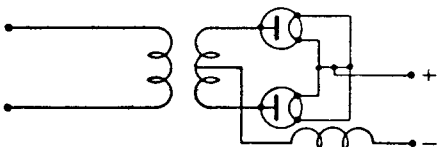


4079A

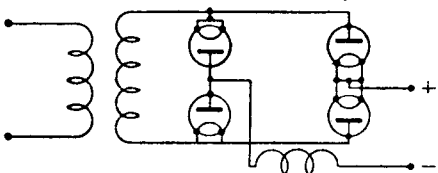
Circuit
No.
1



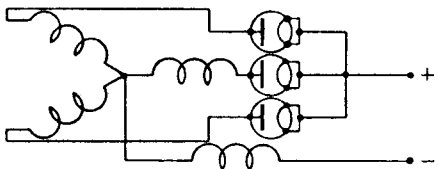
2



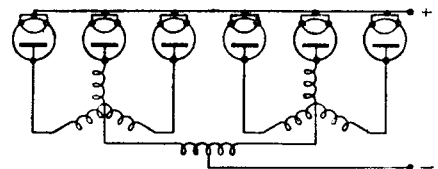
3



4



5



6

