

# Mullard OSCILLOGRAPH TUBE

# E41-G4/B4

## CATHODE RAY TUBE FOR OSCILLOGRAPHIC USE

4 - Inch Screen

Heater Vf = 4.0 V  
If = 1.0 A

Capacities CG = 7.5 uuF  
CD1D1' = 2.6 uuF  
CD2D2' = 2.8 uuF

Fluorescent Colour - Green (G4) Blue (B4)

Deflection - Double electrostatic for symmetrical operation.

### Operating Conditions

Va2 ..... 1,000 V  
 Val (approx. for focus) ..... 400 V  
 Vg .....(1) ..... 0- -40 V  
 N1 ..... 0.40 mm/V  
 N2 ..... 0.31 mm/V

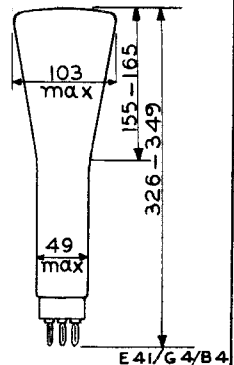
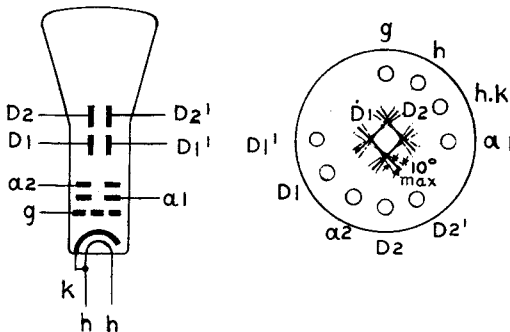
- (1) The Grid Voltage should be adjusted to give the required light intensity. The voltage should never become positive or damage to the tube will result.

Max. writing speed ..... 0.5 km/sec

### Limiting Values

Va2 max ..... 1,200 V  
 Val max ..... 500 V

Arrangement of electrodes and base connections.



# E41-G4/B4

# Mullard OSCILLOGRAPH TUBE

