

Central ELECTRONIC

MANUFACTURERS

DENVILLE, NEW JERSEY

PULSE TUBE

XD-32

44 MEGAWATTS

DESCRIPTION

The Central tube type XD-32 is a completely water-cooled tetrode, having a unipotential matrix cathode, specifically designed for pulse service as a hard tube modulator or switch tube.

SPECIFICATIONS

ELECTRICAL:

Heater Voltage	6.0 volts
Heater Current	233 amperes
Amplification (Triode) Factor	4

PHYSICAL:

Mounting Position - Vertical, Anode Down

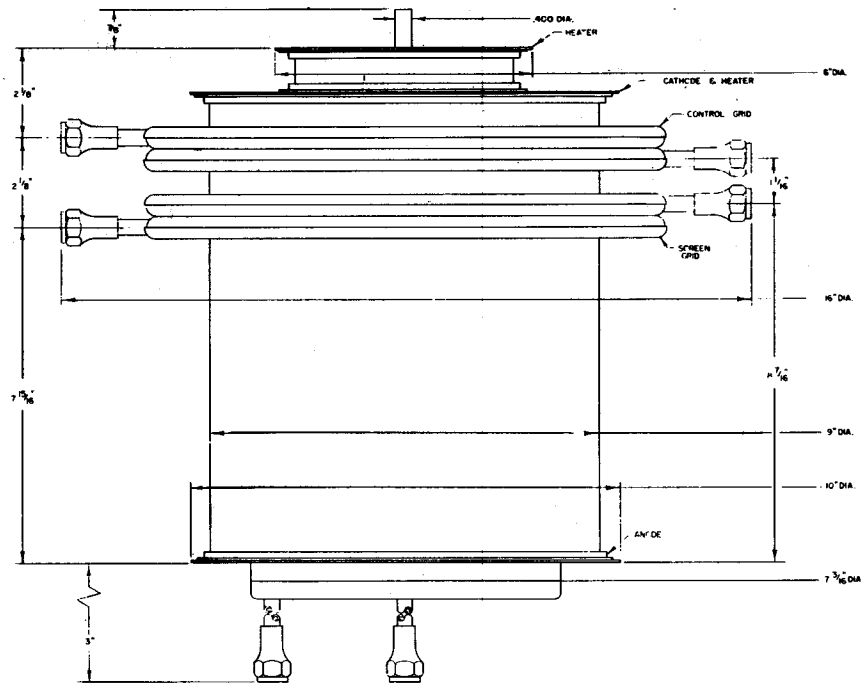
Cooling - Anode	6 GPM
Screen Grid	6 GPM
Control Grid	6 GPM
Pressure	30 psi

Dimensions - As shown on outline

TYPICAL OPERATION AS HARD TUBE MODULATOR

.01 Duty, Class B.

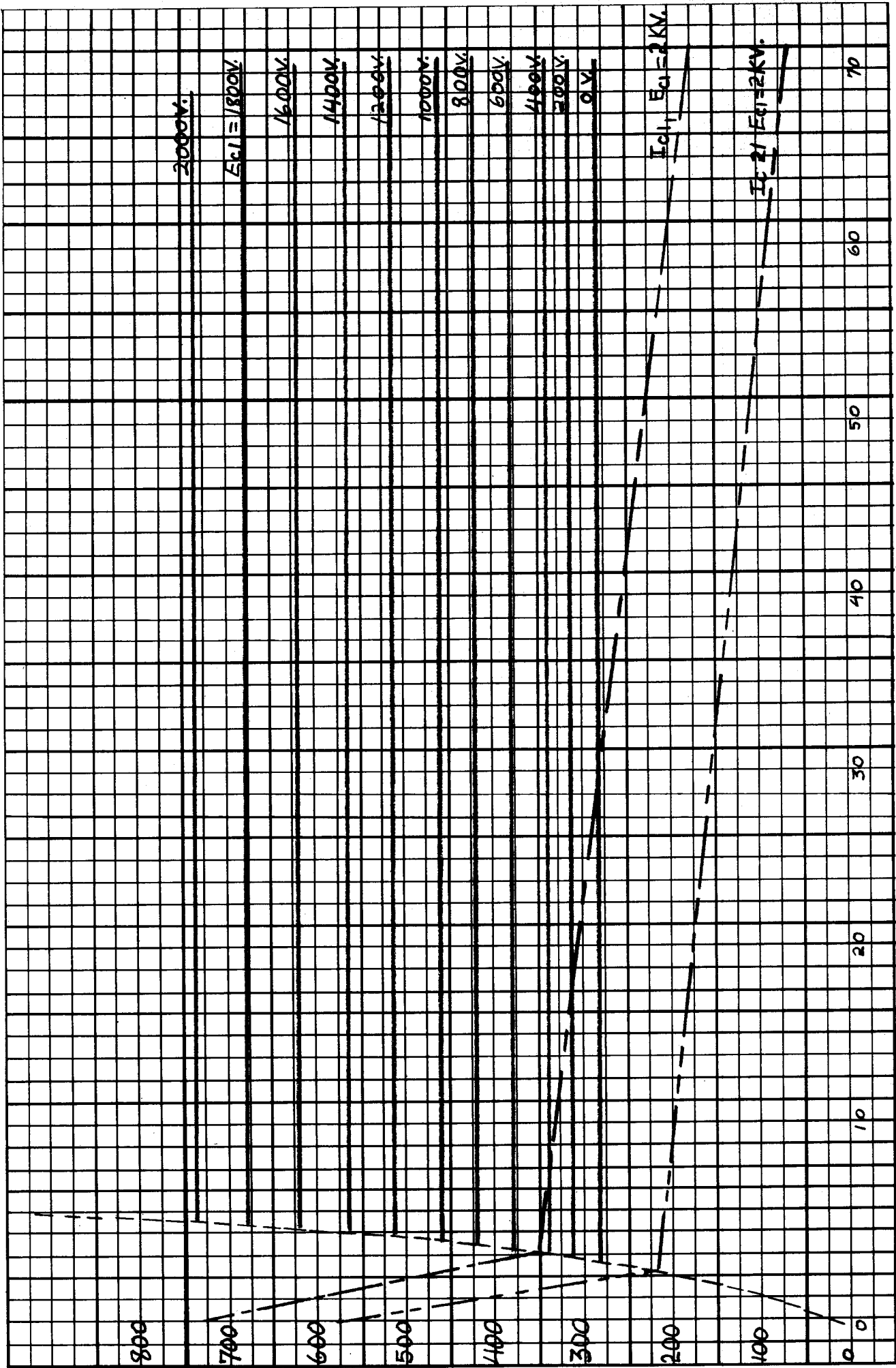
Anode Voltage	65 Kv
Screen Voltage	6 Kv
Control Grid	-1.5 Kv
Peak Anode Current	750 amperes
Peak Screen Current	218 amperes
Anode Dissipation, Average	44 Kw
Screen Dissipation, Average	13 Kw
Grid Driving Power, Average	7 Kw
Grid Driving Power, Peak	708 Kw
Peak Grid Voltage	2 Kv
Power Output, Peak	44 Mw
Pulse Width (max.)	25 μ seconds



PROVISIONAL DATA
Issued 5/60
Check factory before
finalizing designs.

(Over)





2000V.

$E_{c1} = 1800V$.

1600V.

1400V.

1200V.

1000V.

800V.

600V.

400V.

200V.

0V.

$I_{c1}, E_{c1} = 2KV$.

$I_{c2}, E_{c2} = 2KV$.

800

700

600

500

400

300

200

100

0

10

20

30

40

50

60

70