

CENTRAL ELECTRONIC MANUFACTURERS
2 RICHWOOD PLACE
DENVER, NEW JERSEY

TECHNICAL SPECIFICATIONS FOR XD-5

The Central tube type XD-5 is a forced air cooled triode specifically designed for use in high voltage pulse operation.

SPECIFICATIONS:

PHYSICAL

Length $6\frac{1}{2}$ inches
Diameter $4\frac{5}{8}$ inches
Weight $4\frac{1}{4}$ pounds
Mounting Position Vertical
Mounting Socket-CASA or CASB ser.
Type of Cooling Forced air
Required Air Flow on Anode
190 cfm @ 1.21 psi for 3 Kw.
Max. Inc. Air Temp. 45°C
Max. Glass Seal Temp. 180°C

ELECTRICAL

Filament Thoriated Tungsten
Filament V. 14.0 Volts
Filament Current 38.0 Amps.
Filament Starting Cur. 80.0 Amps.
Amplification Factor 25
 $E_c = -200\text{ V. } E_b = 0.2\text{ Amps.}$
Interelectrode Capacitances
Grid to Filament 15.0 uuf
Anode to Filament 1.8 uuf
Grid to Anode. 12.0 uuf

TYPICAL OPERATION (PULSE)

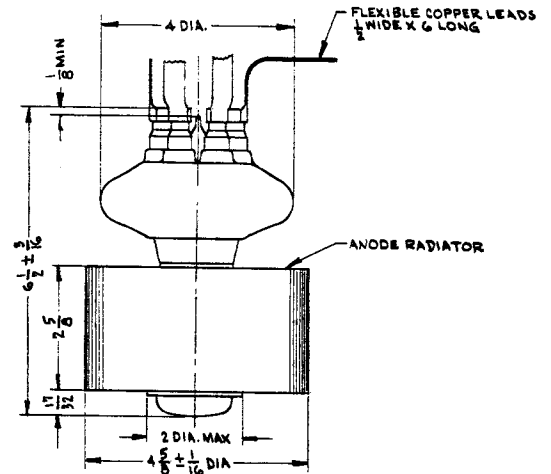
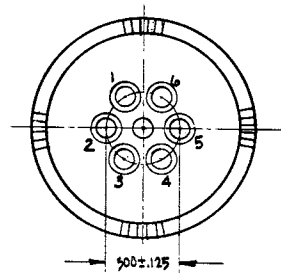
Peak Anode Voltage 30 Kilovolts
Grid Voltage - 1500 Volts DC
Peak Anode Current 25 Amps.
DC Anode Current 0.025 Amps.
DC Grid Current 0.003 Amps.
Average Power Output 750 Watts
Duty .001

MAXIMUM RATINGS

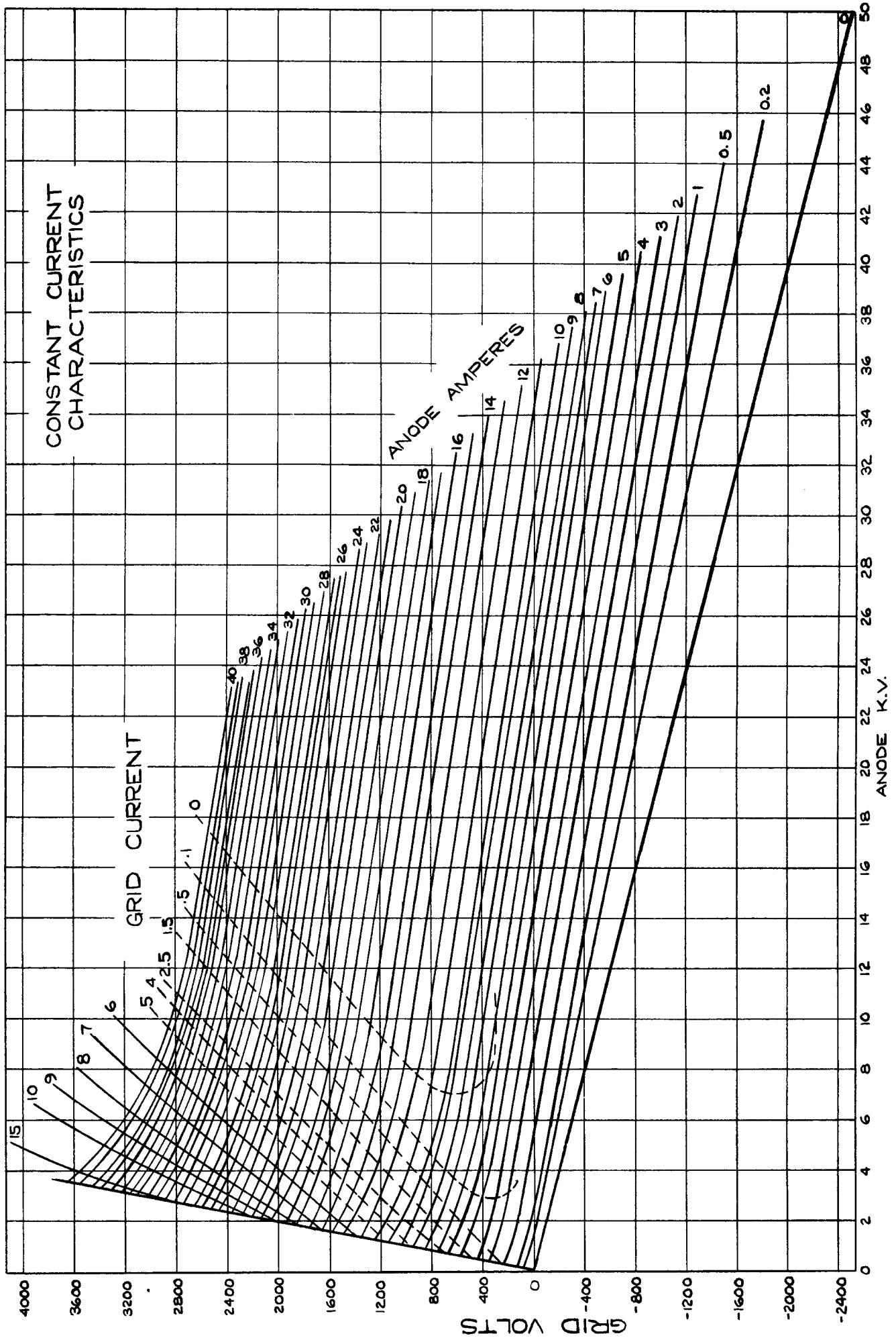
DC Anode Voltage 35Kv.
DC Grid Voltage - 5000 V.
DC Anode Current 0-130 Amps.
DC Grid Current 0.150 Amps.
Pulse Width 90 u sec.
Peak Anode Current 30 Amps.
Peak Cathode Current 45 Amps.
Max. Duty .30
Peak Anode Voltage 40 Kilovolts
Peak Power Output 750 Kilovolts

TUBE TYPE XD-5

TERMINAL COLOR CODE
1- GRID - BLACK
2- FIL. - YELLOW
3- GRID - BLACK
4- F.O.T. - RED
5- GRID - BLACK
6- FIL. - YELLOW



CONSTANT CURRENT CHARACTERISTICS



GRID CURRENT

ANODE AMPERES

ANODE K.V.

GRID VOLTS