

DESCRIPTION

The Sylvania SC-3016 is an electrostatic focus and deflection cathode ray tube, with a flat face $1\frac{1}{8}$ inches in diameter, designed for compact equipments. The electron gun features high deflection sensitivity as well as the newly developed 1.5 volts - 140 ma. heater-cathode assembly. Any standard phosphor can be supplied.

The SC-3016 is cylindrical in shape, $1\frac{1}{8}$ inches in diameter. An anode connection is brought out through the bulb and terminated in a standard J1-25 button. The cathode is internally connected to one leg of the heater. All deflection plate leads are brought out independently through the base.

ELECTRICAL CHARACTERISTICS

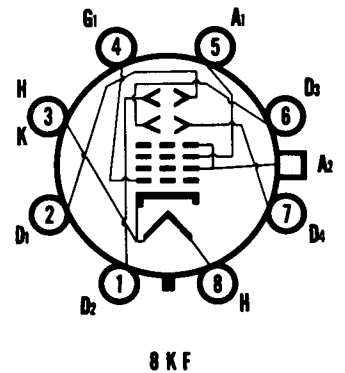
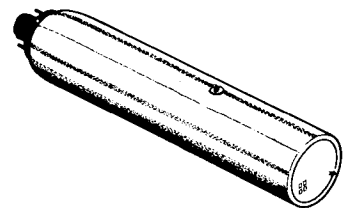
Ratings	Ef V	Ec1 Vdc	Eb1 Vdc	Eb2 Vdc	Ed V	Altitude Feet
Absolute Maximum	$1.5 \pm 10\%$	0	1100	2750	550	10,000
Absolute Minimum	—	-200	—	—	—	(Note 1)
Test Conditions	1.5	adj.	focus	1200	—	—
Characteristics			Condition	Approximate Values		
Heater Current			1.5V	$140 \pm 10\%$ Ma		
Angle Between Traces			—	$90^\circ \pm 1^\circ$		
Line Width A			Note 2	0.4 mm	Max.	
Grid Cutoff Voltage			—	-45 Vdc	Max.	
Focus Voltage			Note 2	200-400 Vdc		
Deflection Factor, 1D2			—	$124 \pm 15\%$ Vdc/in.		
Deflection Factor, 3D4			—	$49 \pm 15\%$ Vdc/in.		

NOTES:

1. A nominal rating of 10,000 feet has been specified. If higher values are required, additional insulation can be incorporated such that 50,000 feet can be attained.
2. Measured at a grid drive of 15 volts above spot cutoff voltage.

QUICK REFERENCE DATA

- $1\frac{1}{8}$ " Direct Viewed
- Round Glass Type
- Flat Face
- Electrostatic Deflection
- Electrostatic Focus
- Very Low Heater Power
- High Deflection Sensitivity



SYLVANIA ELECTRIC PRODUCTS INC.

**Electronic Components Group
ELECTRONIC TUBE DIVISION
SENECA FALLS, NEW YORK**

A Technical Publication

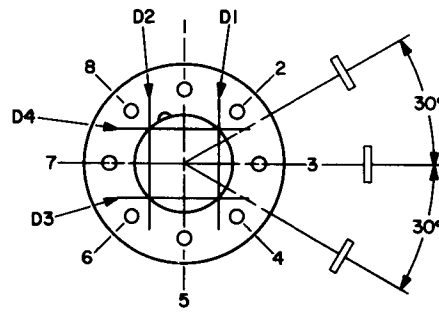
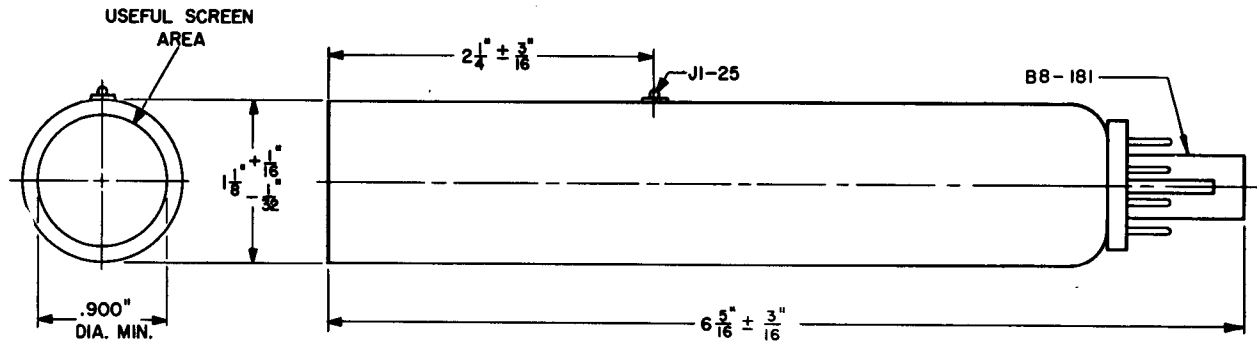
JULY, 1965

PAGE 1 OF 2

File Under

**SPECIAL AND GENERAL
PURPOSE CATHODE RAY TUBES**

OUTLINE



BOTTOM VIEW OF BASE

D60036B