

6/23/48

WESTINGHOUSE

X-RAY TUBE DATA SHEET

Electron Tube Type 5523

GENERAL

Electrical Data

Filament Current Range	<u>3.5 to 5.5</u>	Amperes
Filament Voltage Range	<u>3.5 to 10</u>	Volts

Mechanical Data

Type of Cooling	<u>Air Oil</u>	
Focal Spot Size		
Projected Length	<u>4.2</u>	mm.
Width	<u>4.2</u>	mm.
Base Description	<u>None</u>	
Maximum Overall Dimensions	<u>8-3/16 x 2-7/16</u>	Inches
Outline Drawing Number	<u>60011</u>	
Mounting Position	<u>Any</u>	

MAXIMUM RATINGS

Heat Capacity	<u>100,000</u>	*Heat Units
Continuous Rating	<u>30,000</u>	Heat Units Per Minute

Maximum Fluoroscopic Rating at a Loading  
 of 425 (KV x MA)\*\*

Continuous to Heat  
 Capacity of Head

	<u>Full Wave</u>	<u>Half Wave</u>	<u>Self-Rectified Inverse</u>	<u>Self-Rectified Useful</u>	<u>Units</u>
Peak Plate Voltage	100	100	100	90	Kilovolts
Value of D-C Average Current at Maximum Voltage Rating	169	139	-	103	Milliamps
Allowable Time of Operating Under Above Conditions	1/20	1/20	-	1/20	Second

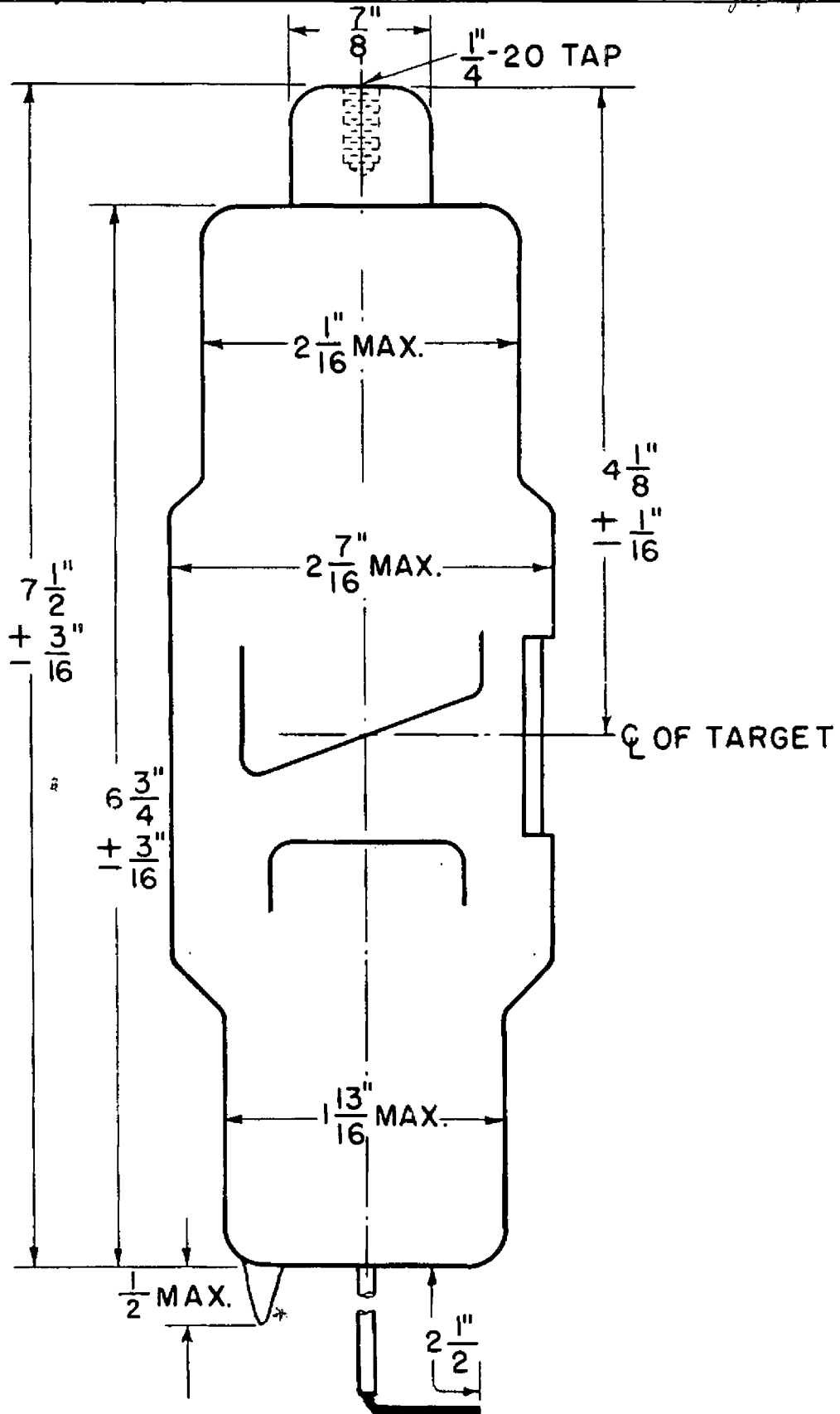
Table of short-time ratings which are given as the product of peak KV useful times  
 D-C average milliamperes.

<u>Time</u>	<u>***Full Wave</u>	<u>Half Wave</u>	<u>Self-Rectified</u>
0.1 Sec.	18250	13000	8700
1 "	11800	9600	6900
5 "	8100	7300	5650
30 "	3400	3400	3400

\*Heat units are defined as the product of the peak voltage in kilovolts, D-C  
 average current in milliamperes, and the exposure time in seconds, and is propor-  
 to energy.

\*\*KV x MA is defined as the product of peak KV times D-C average MA and is propor-  
 tional to power.

\*\*\*Ratings are for 100 KV peak plate voltage.



11009

16-28 25-4-78  
80-5-1-4-20-97