

TYPE DESIGNATION REGISTRATION FORM

TR TUBE

Manufacturer: Bomac Laboratories, Inc.
Beverly, Mass.

December 22, 1954

Mfgs. Type No. BL-62

Tentative JETEC Type No. 6378

The BL-62 is a narrow band TR tube designed to effectively decouple the receiver from a common transmitting and receiving antenna during a period of transmission. It is an integral cavity type. Its tuning range is from 8490 Mc to 9600 Mc.

ELECTRICAL DATA - GENERAL

Loaded Q, ignitor current zero	350 max.
Tuning Range	8490 Mc to 9600 Mc
Ignitor Starting Voltage	500 volts max.
Ignitor Voltage Drop at 100 microamperes ignitor current	200 volts min. to 400 volts max.
Peak Leakage Power	30 mw max.
$p_o = 10kw$; $p_{rr} = 1000$ pps;	
$F = 9375mc$; $t_p = 0.5\mu s$	
$I_i = 100 \mu Adc$	
Ignitor Interaction at 9375 Mc and 100 μAdc ignitor current	0.2db max.
Recovery Time at 10kw peak 3 db down	4.0 μs max.

MECHANICAL DATA - GENERAL

Mounting Position	Any
Number of Ignitors	One
Ambient Temperature Range (non-operating)	-40°C to \pm 100°C
Net weight, approximately	4 oz.

MAXIMUM RATINGS

Transmitter Peak Power	100 kw
Ignitor Current	200 μAdc

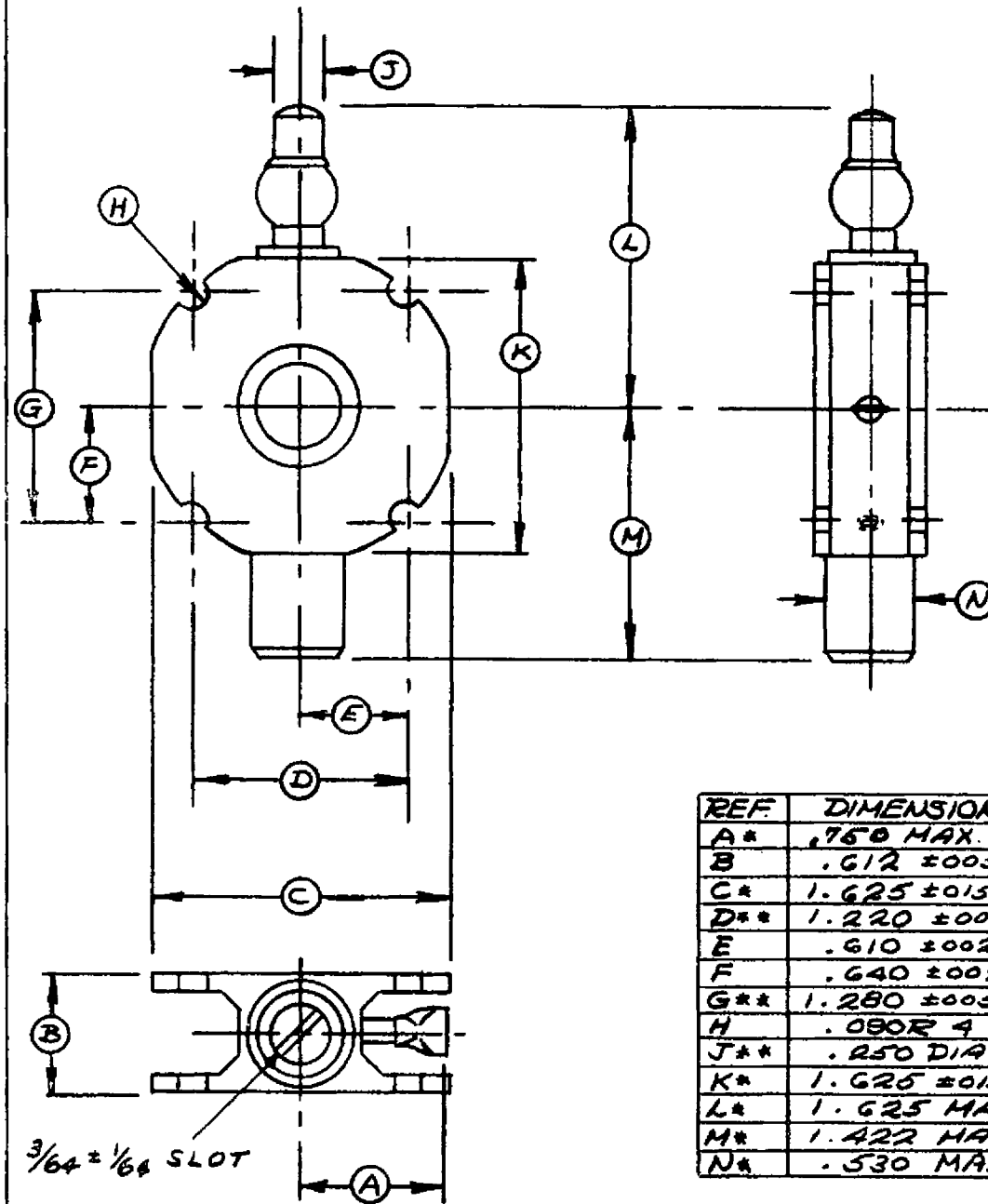
ELECTRICAL AND MECHANICAL DATA WITH LIMITS

Resonant Frequency Shift with Ambient Temperature (from 0°C to 100°C)	0 Mc min. to -20 Mc max.
--	--------------------------

OUTLINE DRAWING

See Outline Drawing 6378/BL-62 dated 12/21/54.

from JETEC release #1400, Jan. 17, 1955



REF	DIMENSIONS
A*	.750 MAX.
B	.612 ±005
C*	1.625 ±015
D**	1.220 ±005
E	.610 ±002
F	.640 ±002
G**	1.280 ±005
H	.080R 4 SLOTS
J**	.250 DIA ±005
K*	1.625 ±015
L*	1.625 MAX.
M*	1.422 MAX.
N*	.530 MAX.

	SPECIFICATION SHEET	BOMAC LABORATORIES INC. SALEM ROAD BEVERLY, MASSACHUSETTS
	<i>OUTLINE</i>	
	<i>6378/BL-62</i>	<i>12-21-54</i> <i>ED</i>