

# JETEC TYPE DESIGNATION REGISTRATION FORM

## TR TUBE

Manufacturer's Designation: BL-57  
JETEC Designation: 6635  
Manufacturer: Bomac Laboratories, Inc.  
Beverly, Mass.

March 8, 1957

### GENERAL CHARACTERISTICS

The 6635 is a narrow band TR tube designed to effectively decouple the receiver from a common transmitting and receiving antenna during a period of transmission. It is an integral cavity type. Its tuning range is from 2390 to 2710 megacycles.

### ELECTRICAL DATA-TYPICAL VALUES

Tuning Range	2390 to 2710Mc/sec
Ignitor Ignition Time (max.)	5 sec.
Ignitor Voltage Drop at $I_i=100\mu\text{A}$ dc	415-525 volts
Spike Leakage Energy (max.)	0.3 ergs
F= 2700Mc; $p_o=4\text{kw}$ ; $t_{p1}=0.5\mu\text{s}$ ; $t_{p2}=0.25\mu\text{s}$ ; $p_{rr}=1000\text{pps}$ ; $I_i=100\mu\text{A}$ dc	
Flat Leakage Power (max.)	50 mw
(See Spike Leakage for test conditions)	
Insertion Loss (max.) at F=2700Mc and $I_i=0$	2 db
Ignitor Interaction (max.) at F=2700Mc and $I_i=100\mu\text{A}$ dc	0.3 db
Recovery Time (max.) at 2kw 3 db down	2 $\mu\text{sec}$ .

### MECHANICAL DATA-GENERAL

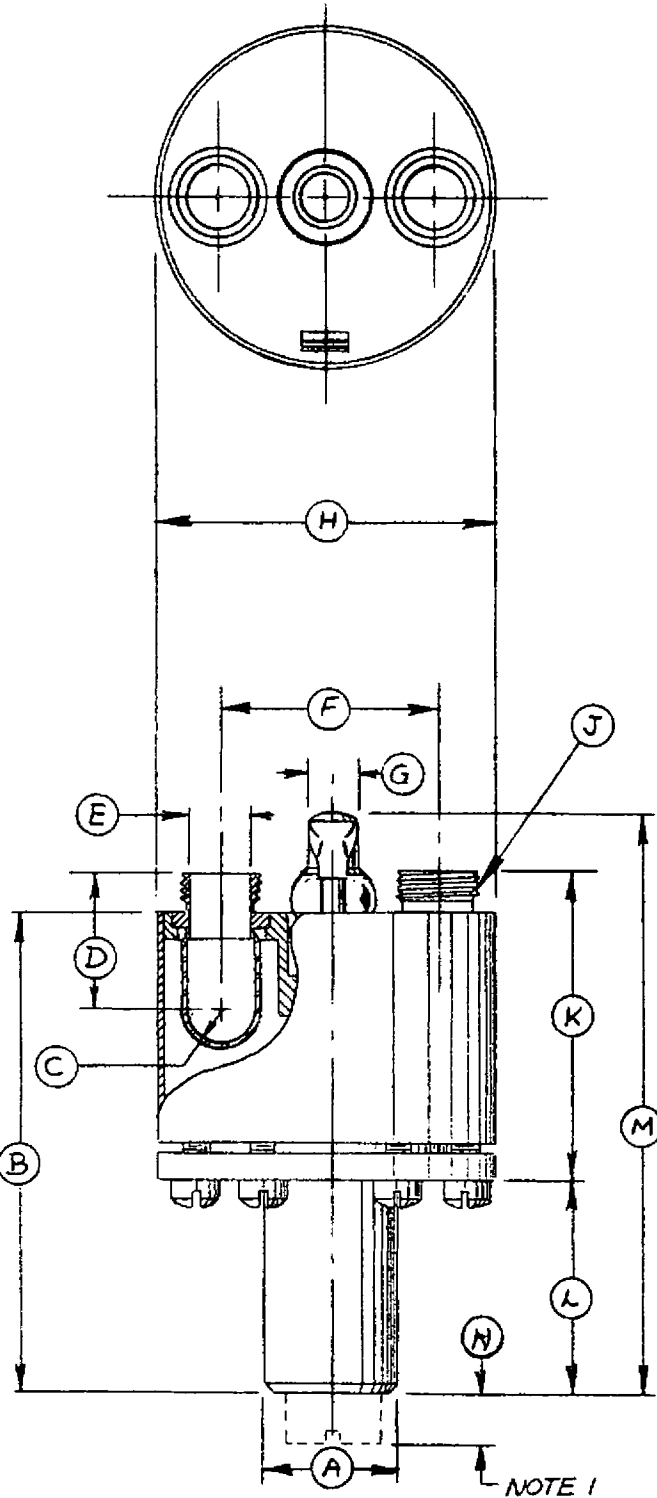
Mounting Position	Any
Weight, approximately	0.5 lbs.

### ABSOLUTE MAXIMUM RATINGS

Transmitter Peak Power	4 kw
Transmitter Average Power	2 W
Ignitor Current	200 $\mu\text{A}$ dc

### OUTLINE DRAWING

As per attaching drawing dated 6-29-54



REF.	DIMENSIONS
A**	.680 DIA
B	2 1/2 ± 1/16
C	.189 R. MIN
D	.466
E	.312 D ± 002
F*	1.114
G**	.250 DIA. NOM
H*	1.750 DIA ± 010
J	7/16 - 20 NF -
K	1 23/32 ± 1/32
L*	1 3/32 ± 1/32
M*	3 7/32 APPROX.
N	5/16 MAX.

NOTE:-  
 1. APPLIES WHEN TUNING SCREW IS AT ITS EXTREME OUTER POSITION

<b>SPECIFICATION SHEET</b>		BOMAC LABORATORIES INC. SALEM ROAD BEVERLY, MASSACHUSETTS
OUTLINE		
6635/BL-57, BL-602		6-29-54 E.D.