

JETEC TYPE DESIGNATION REGISTRATION FORM

TR TUBES

Manufacturer's Designation: BL-46
JETEC Designation: 6639
Manufacturer: Bomac Laboratories, Inc.
Beverly, Massachusetts

March 11, 1957

GENERAL CHARACTERISTICS

The 6639 is a narrow band tunable TR tube designed to effectively decouple the receiver from a common transmitting and receiving antenna during a period of transmission. It is an integral cavity type. Its tuning range is from 5450 to 5650 megacycles.

ELECTRICAL DATA-TYPICAL VALUES

Loaded Q (max.)	325
Tuning Range	5450 to 5650 Mc/sec.
Ignitor Ignition Time (max.)	5 sec.
Ignitor Voltage Drop at $I_i=100\mu\text{A}$ dc	200-350 Volts
Leakage Power (max.)	60 mw
F= 5550Mc; $p_o=15\text{kw}$; $t_p=0.2\mu\text{s}$;	
prf=1500pps; $I_i=100\mu\text{A}$ dc	
Insertion Loss (max.) at 5550Mc and $I_i=0$	1.2 db
Ignitor Interaction (max.) at 5550Mc and $I_i=100\mu\text{A}$ dc	0.2 db
Recovery Time (max.) at 15kw peak 3 db down	1.5 μs

MECHANICAL DATA-GENERAL

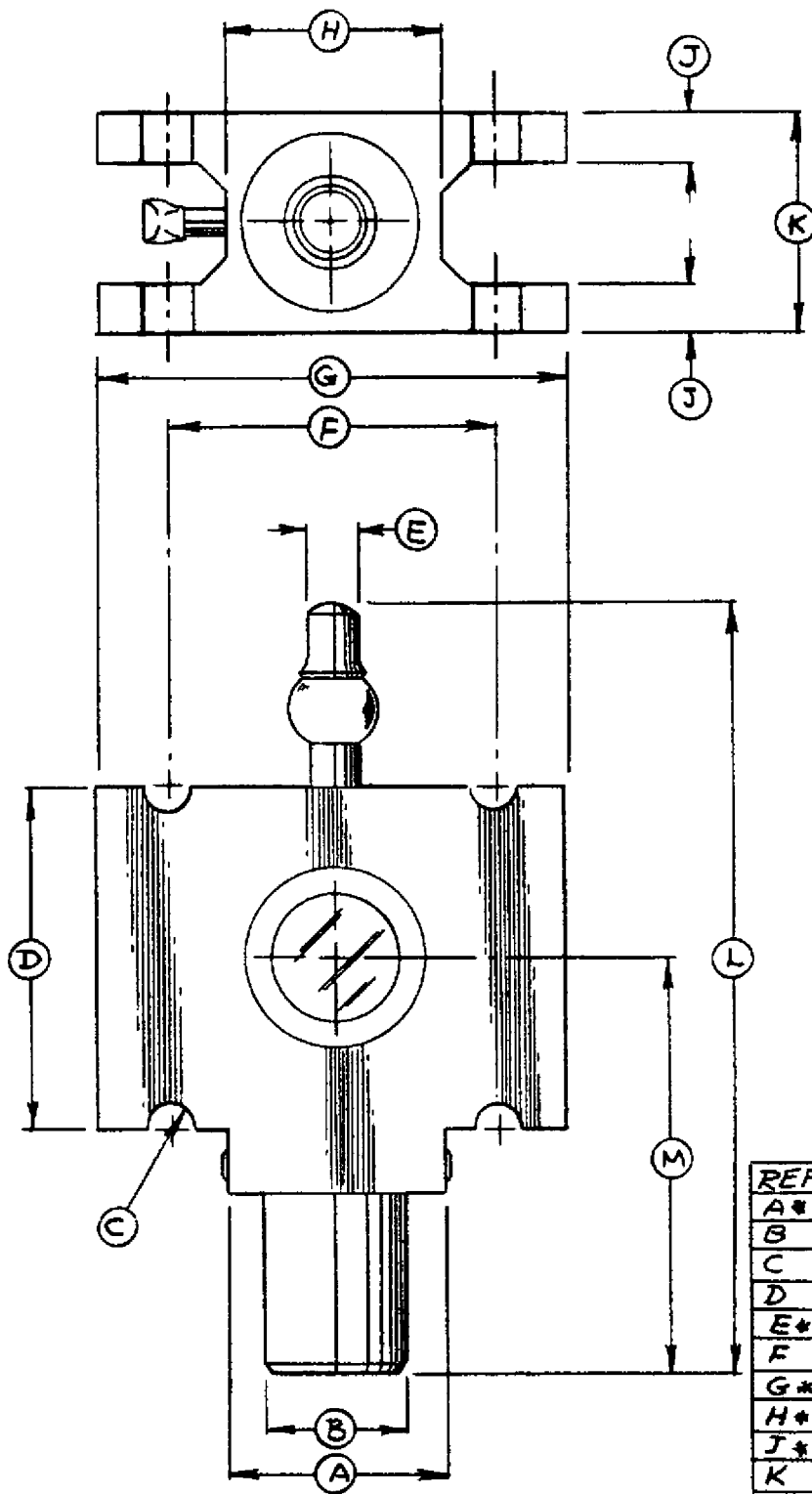
Mounting Position	Any
Weight, approximately	1.25 lbs.

ABSOLUTE MAXIMUM RATINGS

Transmitter Peak Power	20 kw
Transmitter Average Power	60 W
Ignitor Current	200 μA dc

OUTLINE DRAWING

As per attached drawing dated 9-2-54



REF.	DIMENSIONS
A*	1 1/8
B	29/32 DIA
C	#7 (.201) DR (4) HOLES
D	1.812
E**	.250 DIA. NOM.
F	1.750
G*	2 1/2
H*	1 1/8
J**	1/4
K	1.063
L	4" MAX.
M**	2 3/8 MAX.
N	

SPECIFICATION SHEET

OUTLINE

6639/BL-46

BOMAC LABORATORIES INC.
SALEM ROAD
BEVERLY, MASSACHUSETTS

9-2-54

E.D.