

# JETEC TYPE DESIGNATION REGISTRATION FORM

## TR TUBE

Manufacturer's Designation: BL-95H  
JETEC Designation: 6645  
Manufacturer: Bomac Laboratories, Inc.  
Beverly, Massachusetts

March 12, 1957

### GENERAL CHARACTERISTICS

The 6645 is a broad-band TR tube with attached heaters and thermostat to allow operation over a wide range of ambient temperature extending downward well below freezing. The TR tube is designed to effectively decouple the receiver from a common transmitting and receiving antenna during a period of transmission. It is an integral cavity type. Its operational band is from 8490 to 9578 megacycles.

### ELECTRICAL DATA-TYPICAL VALUES

Operational Band	
VSWR 1.9 maximum	8490 to 9578Mc/sec
VSWR 1.4 maximum	8565 to 9487Mc/sec
Ignitor Ignition Time (max.)	5 sec.
Ignitor Voltage Drop at $I_i=100\mu\text{A}$ dc	200-375 volts
Spike Leakage Energy (max.)	0.2 ergs
$F=9000\text{Mc}$ ; $p_o=40\text{kw}$ ; $t_{p1}=1.0\mu\text{s}$ ;	
$t_{p2}=0.5\mu\text{s}$ ; $p_{rr}=1000\text{pps}$ ;	
$I_i=100\mu\text{A}$ dc	
Flat Leakage Power (max.,	60 mw
(see Spike Leakage for test conditions)	
Insertion Loss (max.) at 9000Mc and $I_i=0$	0.7 db
Ignitor Interaction (max.) at 9000Mc and $I_i=100\mu\text{A}$ dc	0.2 db
Recovery Time (max.) at 100kw peak 3 db down	1.5 $\mu\text{s}$
Heater Voltage (380-1000 cps)	115 Vac
Heater Wattage	25 W
Thermostat Cut-In Temperature (min.)	4°C
Thermostat Cut-Out Temperature (max.)	50°C

### MECHANICAL DATA-GENERAL

Mounting Position	Any
Weight, approximately	6 ounces

ABSOLUTE MAXIMUM RATINGS

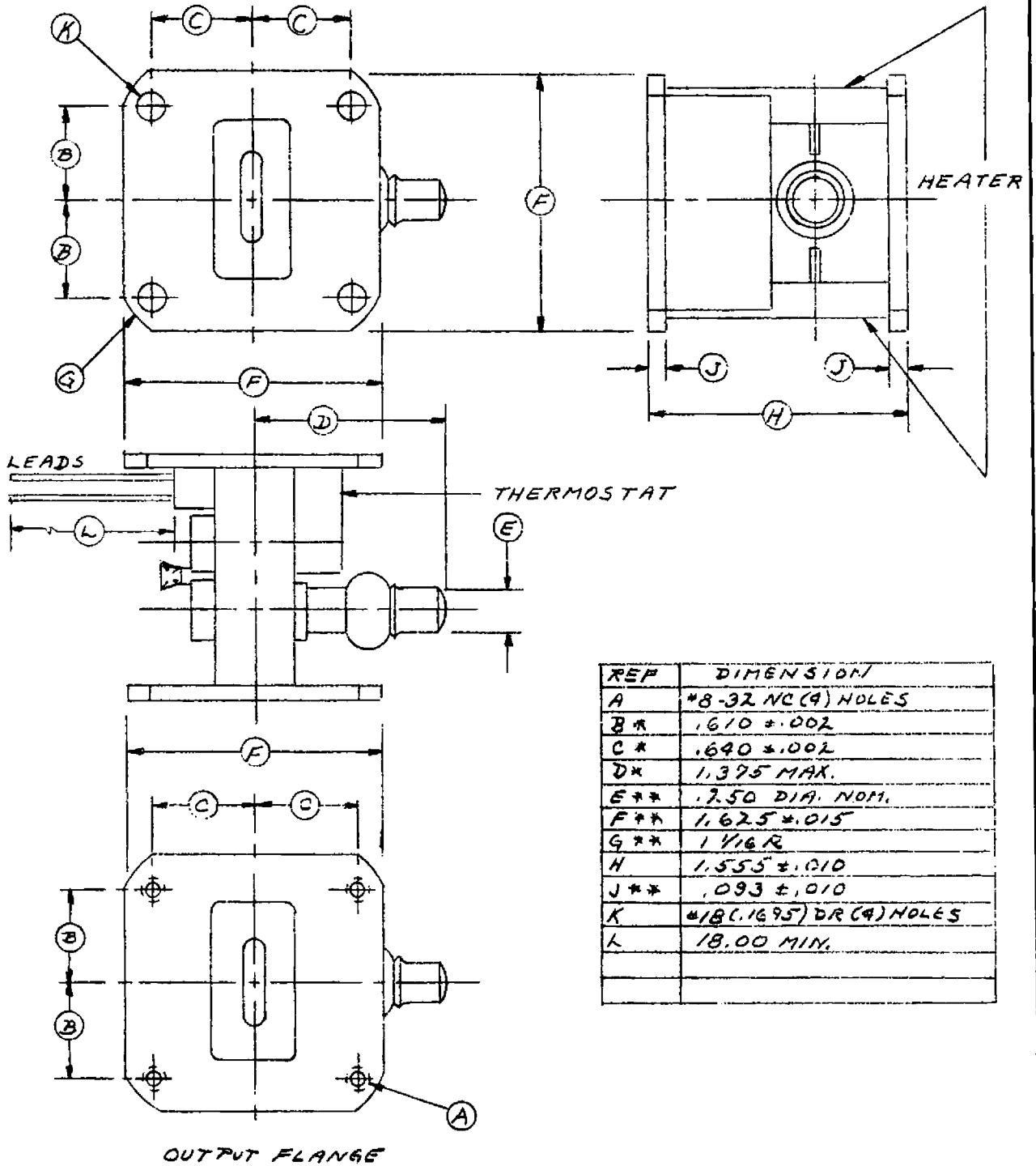
Transmitter Peak Power	100 kw
Transmitter Average Power	100 W
Ignitor Current	200 $\mu$ Adc
Thermostat Contact Current	2 Aac

OUTLINE DRAWING

As per attached drawing dated 12-30-54.

HEATERS, THERMOSTAT & EXHAUST STEM  
NOT TO EXCEED BEYOND FLANGES.

CLEARANCE MUST BE MAINTAINED  
FOR SOCKET HEAD SCREWS.



REF	DIMENSION
A	*8-32 NC(4) HOLES
B*	.610 ± .002
C*	.640 ± .002
D*	1.375 MAX.
E**	1.750 DIA. NOM.
F**	1.625 ± .015
G**	1 1/16 R
H	1.555 ± .010
J**	.093 ± .010
K	*18(.1695) DR(4) HOLES
L	18.00 MIN.

## SPECIFICATION SHEET

OUTLINE

6645/BL-95H, BL-611H

BOMAC LABORATORIES INC.  
SALEM ROAD  
BEVERLY, MASSACHUSETTS

12-30-54

ⓧ