

JETEC TYPE DESIGNATION REGISTRATION FORM

DOUBLE TR TUBE

Manufacturer's Designation: BL-615
JETEC Designation: 6648
Manufacturer: Bomac Laboratories, Inc.
Beverly, Massachusetts

April 1, 1957

GENERAL CHARACTERISTICS

The 6648 is a double broadband TR tube designed to operate in a system which makes use of each half of the tube in separate channels. It is for use with RG52/U size waveguide. It is an integral cavity type with fixed tuned gaps. Its operational band is from 8490 to 9578 megacycles.

ELECTRICAL DATA-TYPICAL VALUES

Note 1

Operational Band

VSWR 1.9 maximum

8490 to 9578 Mc/s

VSWR 1.4 maximum

8565 to 9487 Mc/s

Ignitor Ignition Time (max.)

5 sec.

Ignitor Voltage Drop at $I_i=100\mu\text{A dc}$

200-375 volts

Spike Leakage Energy (max)

0.3 ergs

$F=9000\text{ Mc}$; $p_o=40\text{ kw}$; $t_{p1}=1.0\mu\text{s}$;

$t_{p2}=0.5\mu\text{s}$; $p_{rr}=1000\text{ pps}$;

$I_i=100\mu\text{A dc}$

Flat Leakage Power (max.)

40 mw

(See Spike Leakage for test conditions)

Insertion Loss (max.) at $F=9000\text{ Mc}$ and $I_i=0$

0.7 db

Ignitor Interaction (max.) at $F=9000\text{ Mc}$ and $I_i=100\mu\text{A dc}$

0.2 db

Recovery Time (max.) at 200kw peak 3 db down

10 μs

MECHANICAL DATA-GENERAL

Mounting Position

Any

Number of Electrodes

Two

Weight, approximately

8 ounces

ABSOLUTE MAXIMUM RATINGS

Transmitter Peak Power

200 kw

Transmitter Average Power

200 W

Ignitor Current

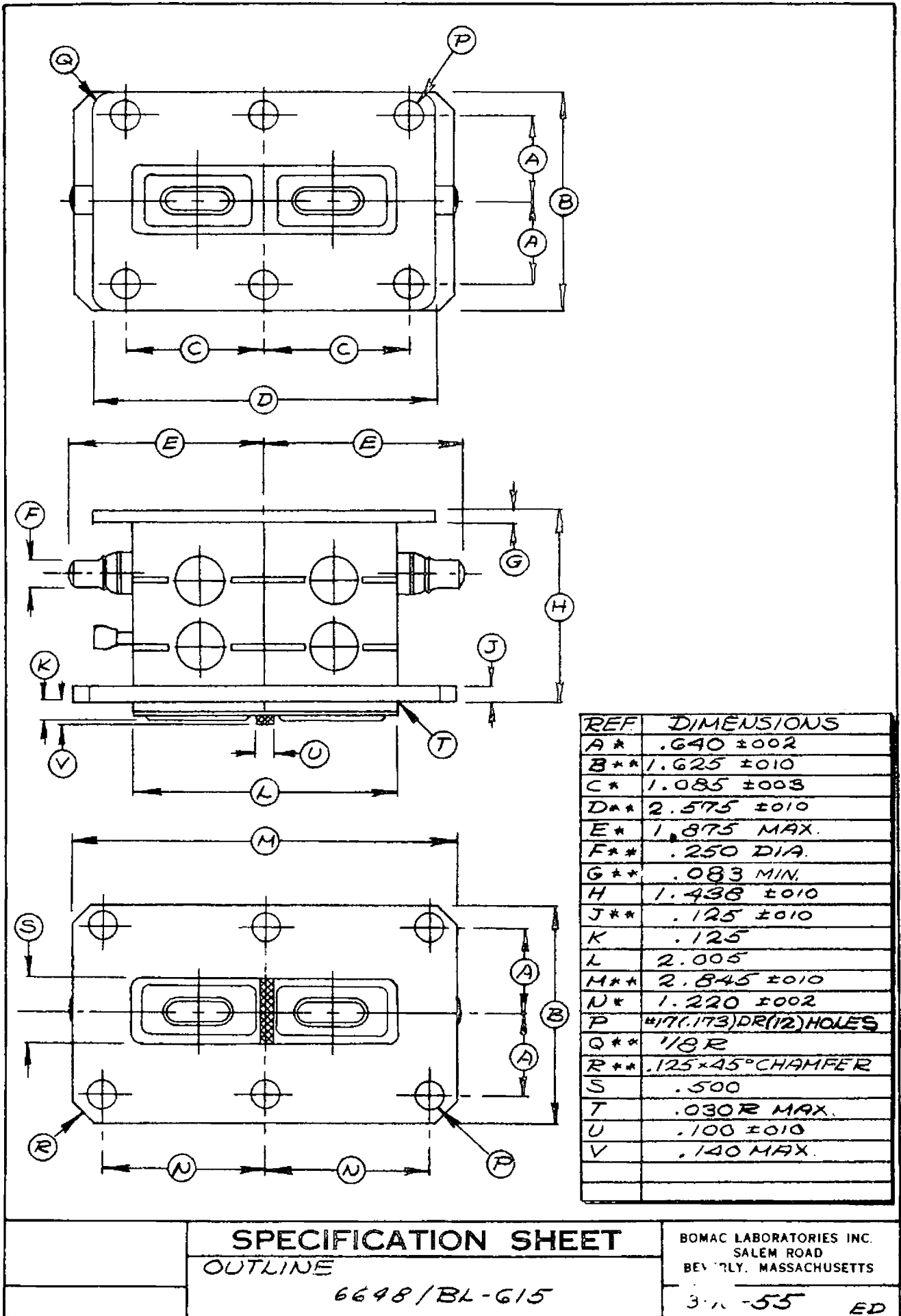
200 $\mu\text{A dc}$

OUTLINE DRAWING

Outline as per attached drawing dated 3-18-55

Tube Mounting per attached drawing dated 11-2-54

Note 1: Each half of the tube is measured as a separate unit.



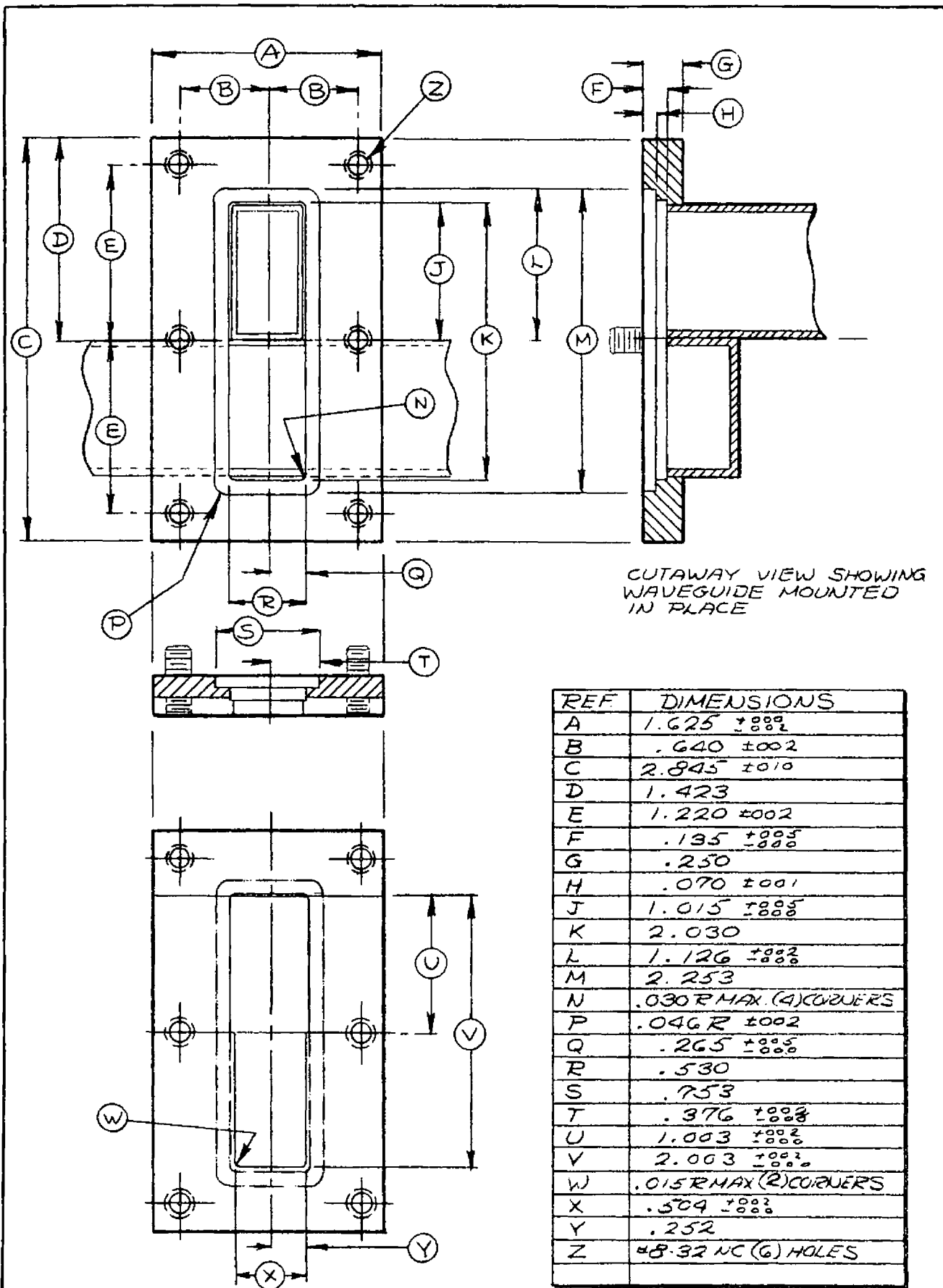
SPECIFICATION SHEET

OUTLINE

6698/BL-615

BOMAC LABORATORIES INC.
SALEM ROAD
BEVERLY, MASSACHUSETTS

3-55 ED



SPECIFICATION SHEET		BOMAC LABORATORIES INC. SALEM ROAD BEVERLY, MASSACHUSETTS
TUBE MOUNTING		
GS-2E-1.10.30.07	6648/ BL-615, BL-625	11-2-54 E.D.