

7017 (606L) FULL WAVE RECTIFIER TUBE

TECHNICAL INFORMATION

Description: An argon-mercury vapor, half-wave, rectifier tube designed especially for industrial power rectifier applications up to 250 volts d. c.

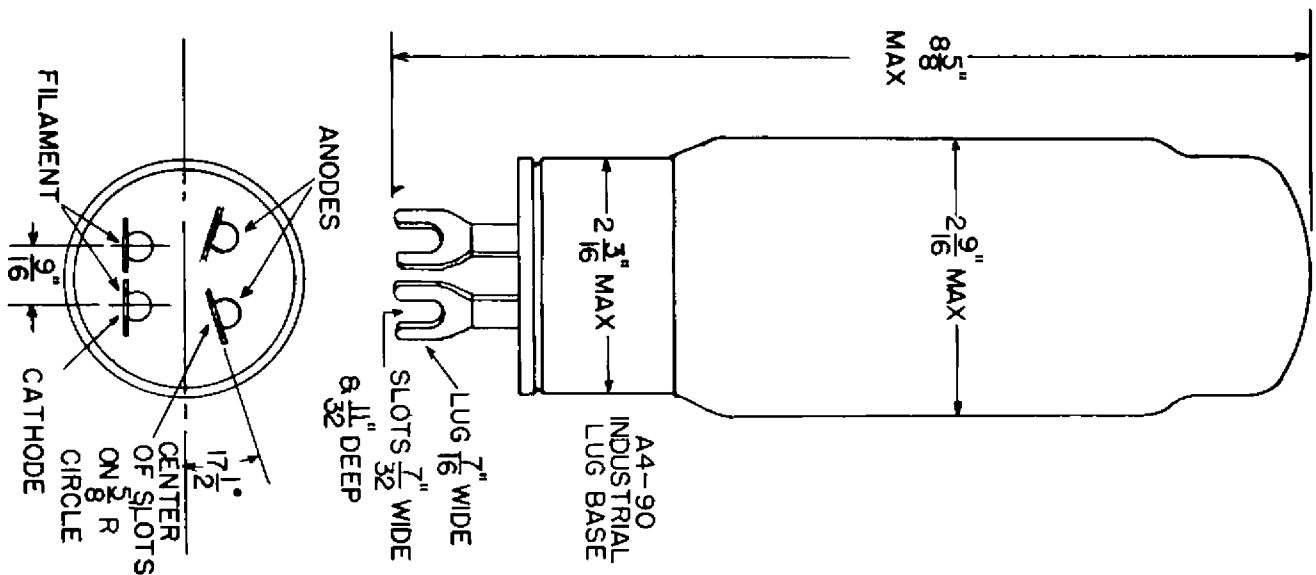
dc Amperes output (maximum)	6.4
Instantaneous Amperes output (maximum)	25.6
Maximum time of averaging anode current (seconds)	5
Maximum peak inverse volts	900
Filament volts	2.5
Filament amperes	17 ± 2
Filament heating time (seconds)	40
Typical arc drop at 9 amperes peak (volts)	10
Typical Anode starting voltage (volts)	10
Maximum ac short circuit current (amperes)	360
Condensed mercury temperature limits (°C) *	0 to +90
Approx. temp. rise, cond. merc. above ambient, no load (°C)	30
Approx. temp. rise, cond. merc. above ambient, full load (°C)	40
Mounting position	vertical, base down
Net weight (ounces)	8
Approx. shipping weight (lbs.)	3

*Satisfactory operation will be obtained between 0 and +90°C. For long life the tube should be operated between +40 and +90°C condensed mercury, or approximately 0 to +50°C ambient.

ALL DATA ARE BASED ON RETURNS TO FILAMENT CENTER TAP

LIGHT FILAMENT BEFORE APPLYING LOAD

OUTLINE DRAWING



from JETEC release #1984, July 29, 1957

Printed in USA/6-57/GR

NATIONAL ELECTRONICS, INC.

GENEVA, ILLINOIS, U. S. A.